

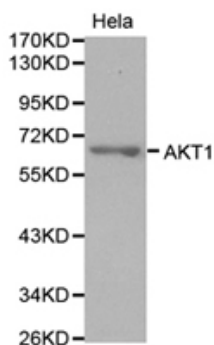


## CDK6 Polyclonal Antibody

**E90704**

- Catalog Number:** E90704  
**Amount:** 100ul  
**Background:** CDK6(Cyclin-dependent kinase 6) is involved in initiation and maintenance of cell cycle exit during cell differentiation and it prevents cell proliferation and regulates negatively cell differentiation, but is required for the proliferation of specific cell types. The range of the molecular weight is 34-50 KDa. This antibody is specific to CDK6.  
**Species:** Rabbit  
**Isotype:** IgG  
**Storage/Stability:** Store at -20oC or -80oC. Avoid freeze / thaw cycles. Buffer: PBS with 0.02% sodium azide, 50% glycerol, pH7.3.  
**Synonyms:** MGC59692; PLSTIRE  
**Immunogen:** Recombinant protein of human CDK6  
**Purification:** Affinity purification  
**Reactivity:** H M R  
**Applications:** WB IHC IF  
**Molecular Weight:** 36kDa  
**Swiss-Prot No. :** Q00534  
**Gene ID:** 1021

WB 1:500 - 1:1000  
IHC 1:50- 1:100  
IF 1:20- 1:50



**For Research Use Only**