



MECP2 Polyclonal Antibody

E90707

Catalog Number: E90707**Amount:** 100ul

Background: METHYL-CpG-BINDING PROTEIN 2 (MECP2), is a chromatin-associated protein that can both activate and repress transcription. Mecp2 in the adult mouse is high in the brain, lung, and spleen, lower in heart and kidney. MECP2 takes part in the control of neuronal activity-dependent gene regulation, and this process may underlie the pathology of Rett syndrome. Chromosomal protein that binds to methylated DNA. It can bind specifically to a single methyl-CpG pair. It is not influenced by sequences flanking the methyl-CpGs. Mediates transcriptional repression through interaction with histone deacetylase and the corepressor SIN3A.

Species: Rabbit**Isotype:** IgG

Storage/Stability: Store at -20°C or -80°C. Avoid freeze / thaw cycles. Buffer: PBS with 0.02% sodium azide, 50% glycerol, pH7.3.

Synonyms: AUTSX3; DKFZp686A24160; MRX16; MRX79; MRXS13; MRXSL; PPMX; RTS; RTT

Immunogen: Recombinant protein of human MECP2

Purification: Affinity purification

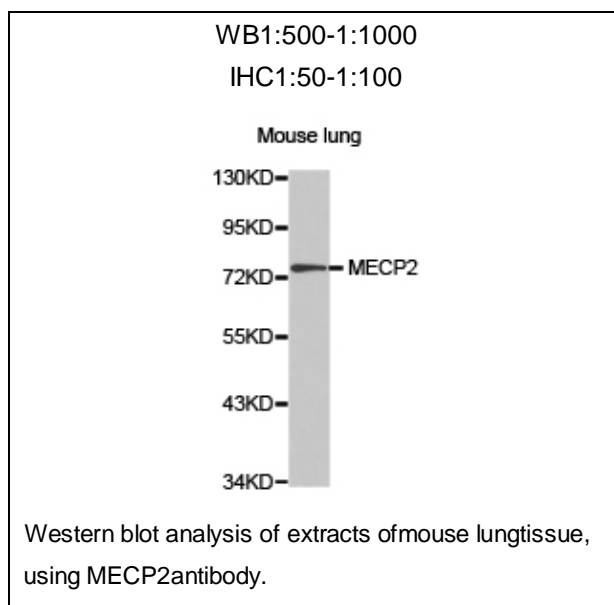
Reactivity: H M R

Applications: WB IHC

Molecular Weight: 53kDa

Swiss-Prot No. : P51608

Gene ID: 4204



For Research Use Only