



TSC1 Polyclonal Antibody

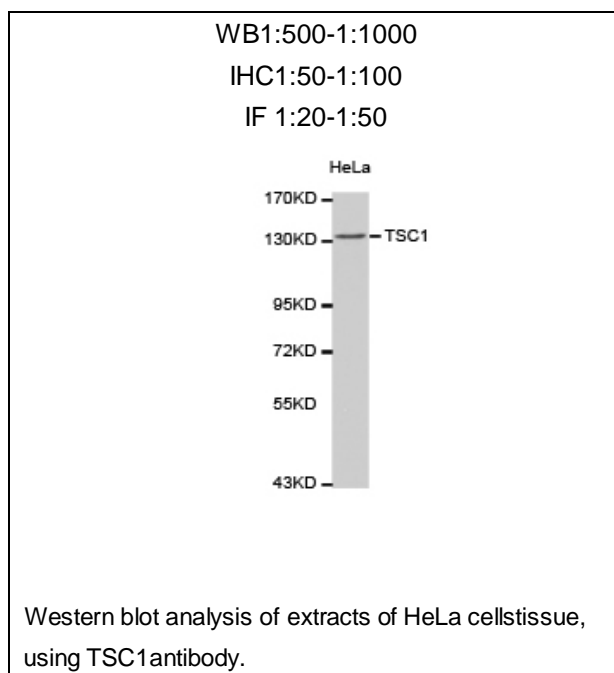
E90721

Catalog Number: E90721**Amount:** 100ul

Background: TSC1, also named as KIAA0243 and TSC, is implicated as a tumor suppressor. It is involved in microtubule-mediated protein transport, but this seems to be due to unregulated mTOR signaling. In complex with TSC2, TSC1 inhibits the nutrient-mediated or growth factor-stimulated phosphorylation of S6K1 and EIF4EBP1 by negatively regulating mTORC1 signaling. It seems not to be required for TSC2 GAP activity towards RHEB. It is involved in microtubule-mediated protein transport, but this seems to be due to unregulated mTOR signaling. Defects in TSC1 are the cause of tuberous sclerosis complex (TSC). Defects in TSC1 may be a cause of focal cortical dysplasia of Taylor balloon cell type (FCDBC). The antibody is specific to TSC1.

Species: Rabbit**Isotype:** IgG

Storage/Stability: Store at -20oC or -80oC. Avoid freeze / thaw cycles. Buffer: PBS with 0.02% sodium azide, 50% glycerol, pH7.3.

Synonyms: KIAA0243; LAM; MGC86987; TSC**Immunogen:** A synthetic peptide of human TSC1**Purification:** Affinity purification**Reactivity:** H M R**Applications:** WB IHC IF**Molecular Weight:** 130kDa**Swiss-Prot No. :** Q92574**Gene ID:** 7248**For Research Use Only**