



E90986

SNAP25 Polyclonal Antibody

Catalog Number: E90986

Amount: 100ul

Background: The 25 kDa synaptosome-associated protein (SNAP25) is a target membrane soluble, N-ethylmaleimide-sensitive factor attachment protein receptor (t-SNARE) that is found on neuronal presynaptic membranes. SNAP25 forms a core complex with the SNARE proteins syntaxin and synaptobrevin to mediate synaptic vesicle fusion with the plasma membrane during Ca²⁺-dependent exocytosis (1). This complex is responsible for exocytosis of the neurotransmitter γ -aminobutyric acid (GABA). Neurotransmitter release is inhibited by proteolysis of SNAP25 by botulinum toxins A and E (2). SNAP25 plays a secondary role as a Q-SNARE involved in endosome fusion; the protein is associated with genetic susceptibility to attention-deficit hyperactivity disorder (ADHD) (3).

Species: Rabbit

Isotype: IgG

Storage/Stability: Store at -20°C or -80°C. Avoid freeze / thaw cycles. Buffer: PBS with 0.02% sodium azide, 50% glycerol, pH 7.3.

Synonyms: SNAP25; FLJ23079; RIC-4; RIC4; SEC9; SNAP; SNAP-25; bA416N4.2; dJ1068F16.2

Immunogen: Recombinant protein of human SNAP25

Purification: Affinity purification

Reactivity: H M R

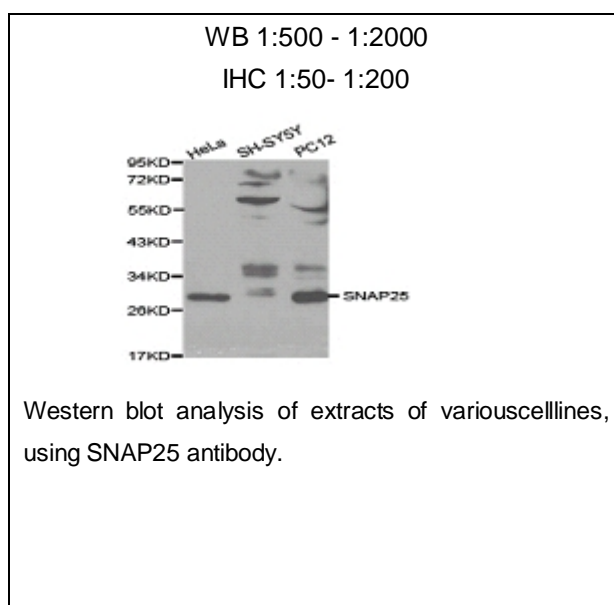
Applications: WB IHC

Molecular Weight: 25kDa

Swiss-Prot No.: P60880

Gene ID: 6616

References: 1. Salaün, C. et al. (2004) *Biochim Biophys Acta* 1693, 81-9. 2. Fan, H.P. et al. (2006) *J Biol Chem* 281, 28174-84. 3. Aikawa, Y. et al. (2006) *Mol Biol Cell* 17, 2113-24.



For Research Use Only

