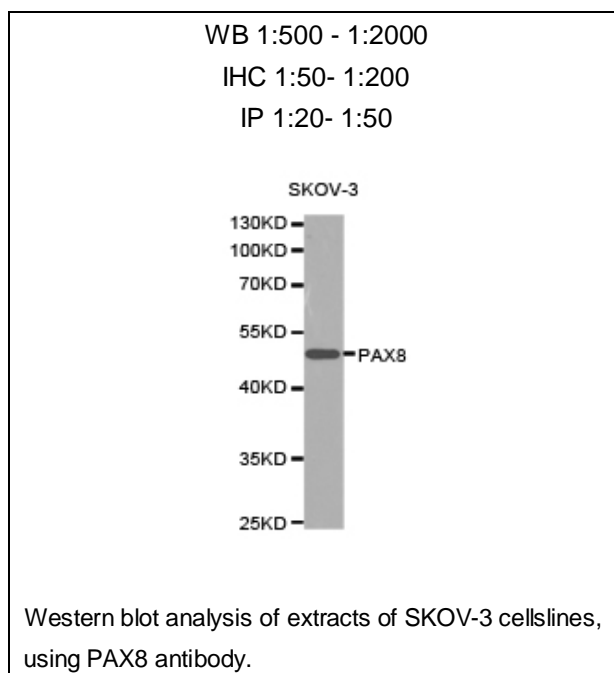




PAX8 Polyclonal Antibody

E91009

- Catalog Number:** E91009
Amount: 100ul
Background: PAX8 is a member of the paired box (PAX) family of transcription factors, typically containing a paired box domain and a paired-type homeodomain. It is expressed during organogenesis of the thyroid gland, kidney and Mullerian system. It is thought to regulate the expression of Wilms tumor suppressor (WT1) gene and mutations in PAX8 have been associated with Wilms tumor cells, thyroid and ovarian carcinomas. PAX8 is a useful marker in distinguishing ovarian carcinomas from mammary carcinomas (PMID: 18724243). PAX8 is expressed in a high percentage of ovarian serous, endometrioid, and clear cell carcinomas, but only rarely in primary ovarian mucinous adenocarcinomas.
Species: Rabbit
Isotype: IgG
Storage/Stability: Store at -20oC or -80oC. Avoid freeze / thaw cycles. Buffer: PBS with 0.02% sodium azide, 50% glycerol, pH7.3.
Synonyms: Paired box 8; Paired box protein Pax 8; PAX8;
Immunogen: Recombinant protein of human PAX8
Purification: Affinity purification
Reactivity: H M
Applications: WB IHC IP
Molecular Weight: 48kDa
Swiss-Prot No. : Q06710
Gene ID: 7849



For Research Use Only