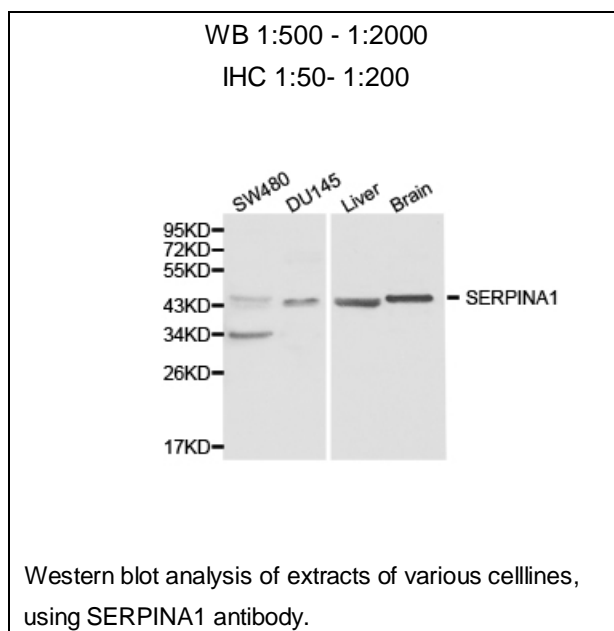




## SERPINA1 Polyclonal Antibody

E91015

- Catalog Number:** E91015  
**Amount:** 100ul  
**Background:** The protein encoded by this gene is secreted and is a serine protease inhibitor whose targets include elastase, plasmin, thrombin, trypsin, chymotrypsin, and plasminogen activator. Defects in this gene can cause emphysema or liver disease. Several transcript variants encoding the same protein have been found for this gene. [provided by RefSeq, Jul 2008]  
**Species:** Rabbit  
**Isotype:** IgG  
**Storage/Stability:** Store at -20oC or -80oC. Avoid freeze / thaw cycles. Buffer: PBS with 0.02% sodium azide, 50% glycerol, pH7.3.  
**Synonyms:** SERPINA1;A1A;A1AT;AAT;MGC23330;MGC9222;PI;PI1;PRO2275 ;  
**Immunogen:** Recombinant protein of human SERPINA1  
**Purification:** Affinity purification  
**Reactivity:** H M R  
**Applications:** WB IHC  
**Molecular Weight:** 47kDa  
**Swiss-Prot No. :** P01009  
**Gene ID:** 5265



**For Research Use Only**