



IL1B Polyclonal Antibody

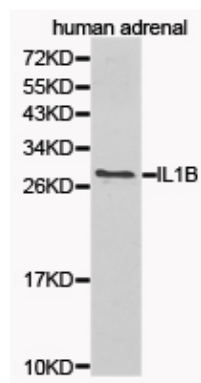
E91112

- Catalog Number:** E91112
- Amount:** 100ul
- Background:** The 20S proteasome is the major proteolytic enzyme complex involved in intracellular protein degradation. PA700, PA28, and PA200 are three major protein Interleukin-1beta (IL-1beta), one of the major caspase-1 targets, is a multifunctional cytokine that is involved in a host of immune and proinflammatory responses (1). It is produced primarily by activated monocytes and macrophages. It signals through various adaptor proteins and kinases that lead to activation of numerous downstream targets (2-6). Human IL-1beta is synthesized as a 31 kDa precursor. To gain activity, the precursor must be cleaved by caspase-1 between Asp116 and Ala117 to yield a 17 kDa mature form (7,8). Detection of the 17 kDa mature form of IL-1beta is a good indicator of caspase-1 activity.
- Species:** Rabbit
- Isotype:** IgG
- Storage/Stability:** Store at -20oC or -80oC. Avoid freeze / thaw cycles. Buffer: PBS with 0.02% sodium azide, 50% glycerol, pH7.3.
- Synonyms:** IL1B;IL-1;IL1-BETA;IL1F2 ;IL1beta
- Immunogen:** Recombinant protein of human IL1B
- Purification:** Affinity purification
- Reactivity:** H M R
- Applications:** WB IHC
- Molecular Weight:** 31kDa
- Swiss-Prot No. :** P01584
- Gene ID:** 3553
- References:** 1. Dinarello, C.A. (1998) Int. Rev. Immunol. 16, 457-499. 2. Burns, K. et al. (1998) J. Biol. Chem. 273, 12203-12209. 3. Cao, Z. et al. (1996) Nature 383, 443-446. 4. Cao, Z. et al. (1996) Science 271, 1128-1131. 5. Wesche, H. et al. (1997) Immunity 7, 837-847. 6. Ninomiya-Tsuji, J. et al. (1999) Nature 398, 252-256. 7. Thornberry, N. A. et al. (1992) Nature 356, 768-774. 8. Cerretti, D. P. et al. (1992) Science 256, 97-100. 9. Grahames, C.B. et al. (1999) Br J Pharmacol 127, 1915-21..

For Research Use Only

WB 1:500 - 1:2000

IHC 1:50- 1:200



Western blot analysis of human adrenal cell lysate
using IL1B antibody.

For Research Use Only