



TACSTD1 Polyclonal Antibody

E91177

Catalog Number: E91177**Amount:** 100ul

Background: Epithelial cell adhesion and activating molecule (EpCAM/CD326) is a transmembrane glycoprotein that mediates the basolateral surface of most epithelial cells. EpCAM is not expressed in adult squamous epithelium, but it is highly expressed in carcinomas (1). Research studies identified EpCAM as one of the first tumor-associated antigens, and it has long been used as a marker for cancer cells. Investigators have shown that EpCAM is highly expressed in cancer cells (reviewed in 2,3).

Species: Rabbit**Isotype:** IgG

Storage/Stability: Store at -20oC or -80oC. Avoid freeze / thaw cycles. Buffer: PBS with 0.02% sodium azide, 50% glycerol, pH7.3.

Synonyms: EPCAM;CO-17A;CO17-1A;EGP;EGP-2;EGP34;EGP40;ESA;Ep-CAM;GA733-2;KS1/4;KSA;M4S1;MIC18;MK-1;

Immunogen: Recombinant protein of human TACSTD1

Purification: Affinity purification

Reactivity: H M R

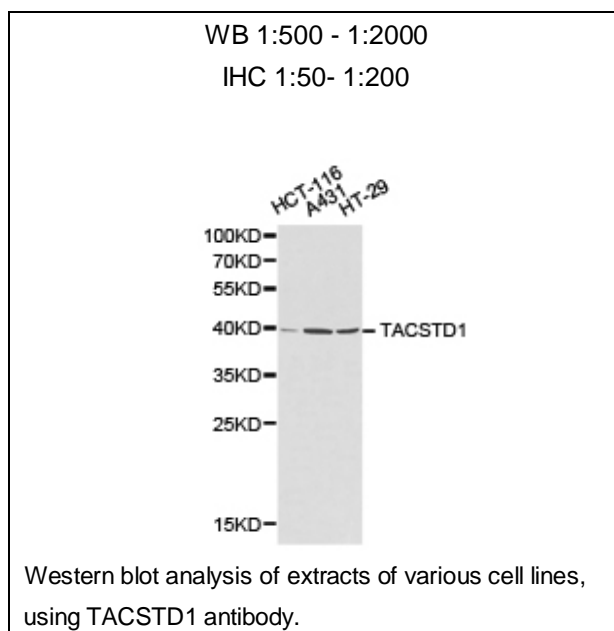
Applications: WB IHC

Molecular Weight: 35kDa

Swiss-Prot No. : P16422

Gene ID: 4072

References: 1. Went, P.T. et al. (2004) Hum Pathol 35, 122-8. 2. Baeuerle, P.A. and Gires, O. (2007) Br J Cancer 96, 417-23. Biol Ther 2, 320-6.



For Research Use Only