



E91191

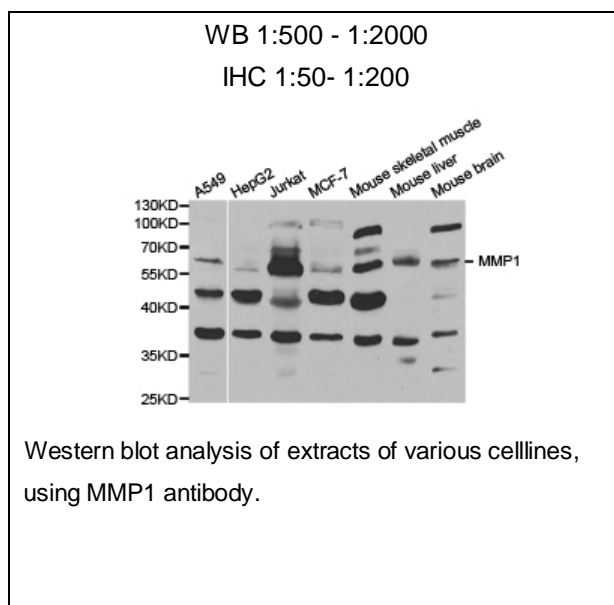
## MMP1 Polyclonal Antibody

**Catalog Number:** E91191**Amount:** 100ul

**Background:** Proteins of the matrix metalloproteinase (MMP) family are involved in the breakdown of extracellular matrix in normal physiological processes, such as embryonic development, reproduction, and tissue remodeling, as well as in disease processes, such as arthritis and metastasis. Most MMP's are secreted as inactive proproteins which are activated when cleaved by extracellular proteinases. This gene encodes a secreted enzyme which breaks down the interstitial collagens, types I, II, and III. The gene is part of a cluster of MMP genes which localize to chromosome 11q22.3. Alternative splicing results in multiple transcript variants.[provided by RefSeq, Mar 2009]

**Species:** Rabbit**Isotype:** IgG

**Storage/Stability:** Store at -20oC or -80oC. Avoid freeze / thaw cycles. Buffer: PBS with 0.02% sodium azide, 50% glycerol, pH7.3.

**Synonyms:** MMP1;CLG;CLGN ;**Immunogen:** Recombinant protein of human ARRB2**Purification:** Affinity purification**Reactivity:** H**Applications:** WB IHC**Molecular Weight:** 54kDa**Swiss-Prot No. :** P03956**Gene ID:** 4312

**For Research Use Only**