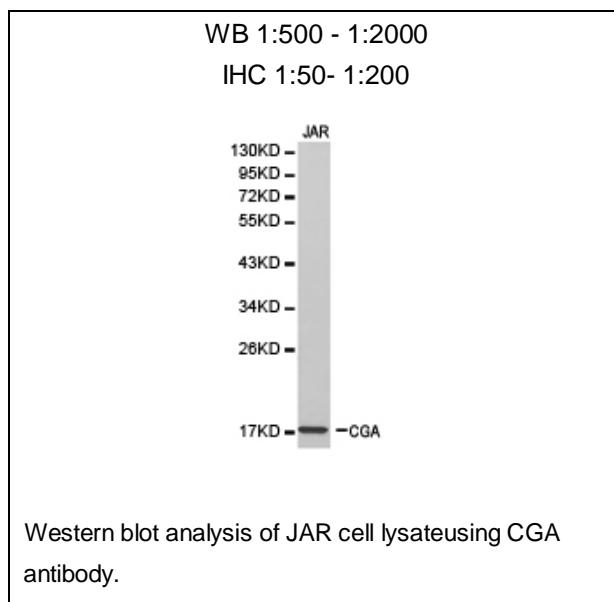




CGA Polyclonal Antibody

E91239

- Catalog Number:** E91239
Amount: 100ul
Background: The four human glycoprotein hormones chorionic gonadotropin (CG), luteinizing hormone (LH), follicle stimulating hormone (FSH), and thyroid stimulating hormone (TSH) are dimers consisting of alpha and beta subunits that are associated noncovalently. The alpha subunits of these hormones are identical, however, their beta chains are unique and confer biological specificity. The protein encoded by this gene is the alpha subunit and belongs to the glycoprotein hormones alpha chain family. Two transcript variants encoding different isoforms have been found for this gene. [provided by RefSeq, Nov 2011]
Species: Rabbit
Isotype: IgG
Storage/Stability: Store at -20oC or -80oC. Avoid freeze / thaw cycles. Buffer: PBS with 0.02% sodium azide, 50% glycerol, pH7.3.
Synonyms: HCG; LHA; FSHA; GPHA; TSHA; GPHA1; CG-ALPHA
Immunogen: Recombinant protein of human CGA
Purification: Affinity purification
Reactivity: H M R
Applications: WB IHC
Molecular Weight: 13kDa
Swiss-Prot No. : P01215
Gene ID: 1081



For Research Use Only