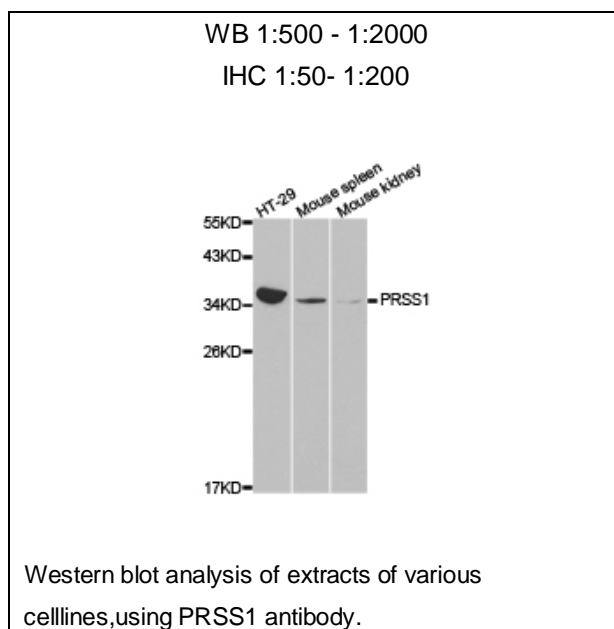




PRSS1 Polyclonal Antibody

E91242

- Catalog Number:** E91242
Amount: 100ul
Background: This gene encodes a trypsinogen, which is a member of the trypsin family of serine proteases. This enzyme is secreted by the pancreas and cleaved to its active form in the small intestine. It is active on peptide linkages involving the carboxyl group of lysine or arginine. Mutations in this gene are associated with hereditary pancreatitis. This gene and several other trypsinogen genes are localized to the T cell receptor beta locus on chromosome 7. [provided by RefSeq, Jul 2008]
Species: Rabbit
Isotype: IgG
Storage/Stability: Store at -20oC or -80oC. Avoid freeze / thaw cycles. Buffer: PBS with 0.02% sodium azide, 50% glycerol, pH7.3.
Synonyms: TRP1; TRY1; TRY4; TRYP1
Immunogen: Recombinant protein of human PRSS1
Purification: Affinity purification
Reactivity: H M R
Applications: WB IHC
Molecular Weight: 27kDa
Swiss-Prot No. : P07477
Gene ID: 5644



For Research Use Only