



## F4-80 Polyclonal Antibody

E91256

**Catalog Number:** E91256**Amount:** 100ul

**Background:** The epidermal growth factor (EGF)-TM7 family constitutes a group of class B G-protein coupled receptors, which includes CD97, EMR1 (EGF-like molecule containing mucin-like hormone receptor 1, designated F4/80 in mouse), EMR2, EMR3, FIRE, and ETL (1–3). These family members are characterized by an extended extracellular region with several N-terminal EGF domains, and are predominantly expressed on cells of the immune system (1–3). The EGF-TM7 protein family are encoded by a gene cluster on human chromosome 19p13 (1,3,4). The F4/80 molecule is solely expressed on the surface of macrophages and serves as a marker for mature macrophage tissues, including Kupffer cells in liver, splenic red pulp macrophages, brain microglia, gut lamina propria, and Langerhans cells in the skin (1). F4/80/EMR1 undergoes extensive N-linked glycosylation as well as some O-linked glycosylation (5,6). The function of F4/80/EMR1 is unclear, but it is speculated to be involved in macrophage adhesion events, cell migration, or as a G-protein coupled signaling component of macrophages (1).

**Species:** Rabbit**Isotype:** IgG

**Storage/Stability:** Store at -20oC or -80oC. Avoid freeze / thaw cycles. Buffer: PBS with 0.02% sodium azide, 50% glycerol, pH7.3.

**Synonyms:** Emr1;DD7A5-7;EGF-TM7;F4/80;Gpf480;Ly71;TM7LN3 ;

**Immunogen:** A synthetic peptide of human F4-80

**Purification:** Affinity purification

**Reactivity:** H

**Applications:** WB IHC

**Molecular Weight:** 102kDa

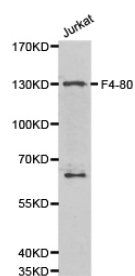
**Swiss-Prot No. :** Q61549

**Gene ID:** 13733

**For Research Use Only**

WB 1:500 - 1:1000

IHC 1:50- 1:100



Western blot analysis of Jurkat cell lysate using F4-80 antibody.