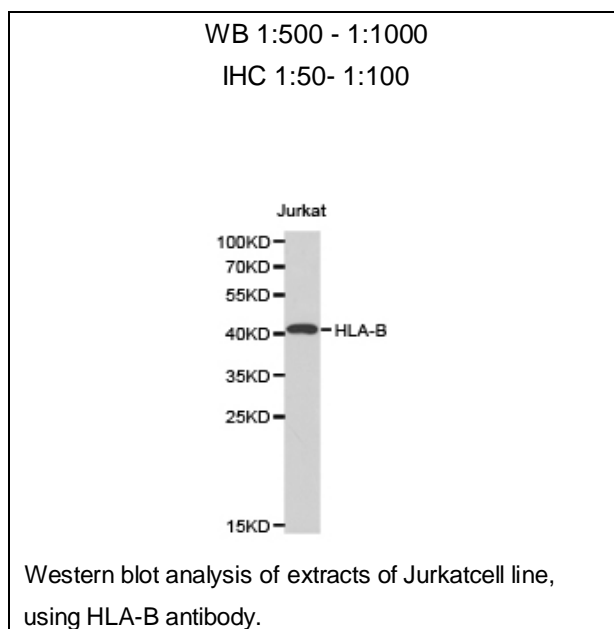




HLA-B Polyclonal Antibody

E91285

- Catalog Number:** E91285
- Amount:** 100ul
- Background:** Human major histocompatibility complex (MHC) antigens, also referred to as human leukocyte antigens (HLA), are encoded by genes located on the short arm of chromosome 6 (6p21.3). There are two classes of HLA antigens: class I (HLA-A, B and C) and class II (HLA-D). This class I molecules are polymorphic membrane glycoproteins composed of a heavy (alpha) chain (44 kDa) which is encoded by a HLA class I gene (HLA-A, B or C), and β 2-microglobulin light (beta) chain (12 kDa). They are involved in the presentation of foreign antigens to the immune system. (PMID: 667938; 3375250)
- Species:** Rabbit
- Isotype:** IgG
- Storage/Stability:** Store at -20oC or -80oC. Avoid freeze / thaw cycles. Buffer: PBS with 0.02% sodium azide, 50% glycerol, pH7.3.
- Synonyms:** AS; HLA-B-7301; HLA-B73; HLAB; HLAC; MGC111087; SPDA1;
- Immunogen:** Fusionproteinof human HLA-B
- Purification:** Affinity purification
- Reactivity:** H
- Applications:** WB IHC
- Molecular Weight:** 40kDa
- Gene ID:** 3106



For Research Use Only