



## PTPN11 Polyclonal Antibody

E91356

**Catalog Number:** E91356**Amount:** 100ul

**Background:** PTPN11 (protein tyrosine phosphatase, non-receptor type 11) is also named as PTP-1D, PTP2, PTP2C, PTP3, SHP2, CFC, CFC, BPTP3, SH-PTP2, SH-PTP3, MGC14433 and belongs to the protein-tyrosine phosphatase family and non-receptor class 2 subfamily. It modulates and regulates signaling through numerous pathways, many of which are active in the developing endocardial cushions and implicated the ERK pathway as a central mechanism (PMID:19017799). Its signaling may play equally important roles in retinal survival in both physiological and pathological conditions (PMID:21576358). Defects in PTPN11 are the cause of LEOPARD syndrome type 1 (LEOPARD1), Noonan syndrome type 1 (NS1), juvenile myelomonocytic leukemia (JMML) and metachondromatosis (MC). It has 3 isoforms produced by alternative splicing. This antibody is specific to PTPN11.

**Species:** Rabbit**Isotype:** IgG

**Storage/Stability:** Store at -20°C or -80°C. Avoid freeze / thaw cycles. Buffer: PBS with 0.02% sodium azide, 50% glycerol, pH7.3.

**Synonyms:** BPTP3; CFC; MGC14433; NS1; PTP-1D; PTP2C; SH-PTP2; SH-PTP3; SHP2

**Immunogen:** Recombinant protein of human PTPN11

**Purification:** Affinity purification

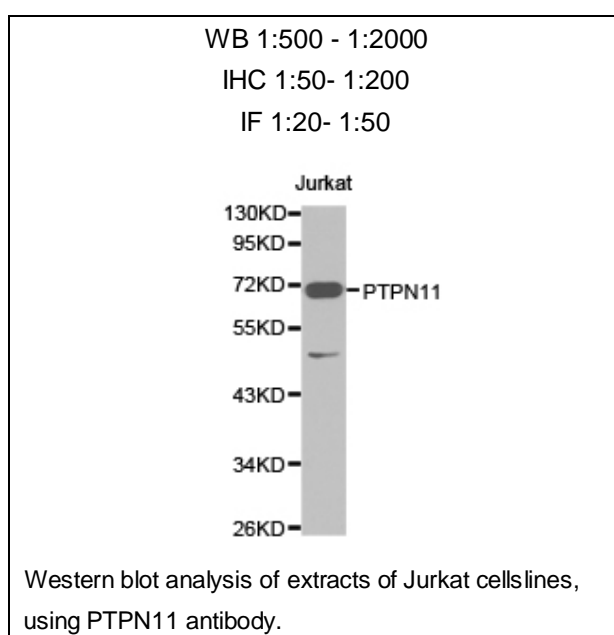
**Reactivity:** H M R

**Applications:** WB IHC IF

**Molecular Weight:** 68kDa

**Swiss-Prot No.:** Q06124

**Gene ID:** 5781



**For Research Use Only**