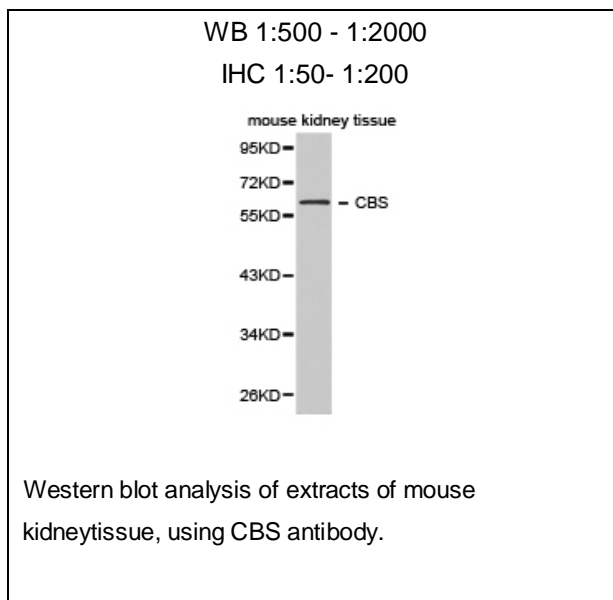




CBS Polyclonal Antibody

E91427

- Catalog Number:** E91427
Amount: 100ul
Background: The CBS gene encodes cystathionine beta-synthase, which catalyzes the first irreversible step of transsulfuration. The CBS enzyme is a homotetramer of 63-kD subunits and requires pyridoxal phosphate and heme for activity(PMID:11230183). CBS protein is localized in most areas of the brain, but predominantly in the cell bodies and neuronal processes of Purkinje cells and Ammon's horn neurons(PMID:12588964). This antibody is specific to CBS.
Species: Rabbit
Isotype: IgG
Storage/Stability: Store at -20oC or -80oC. Avoid freeze / thaw cycles. Buffer: PBS with 0.02% sodium azide, 50% glycerol, pH7.3.
Synonyms: HIP4;CBS;
Immunogen: Recombinant protein of human CBS
Purification: Affinity purification
Reactivity: H M R
Applications: WB IHC
Molecular Weight: 61kDa
Swiss-Prot No. : P35520
Gene ID: 875



For Research Use Only