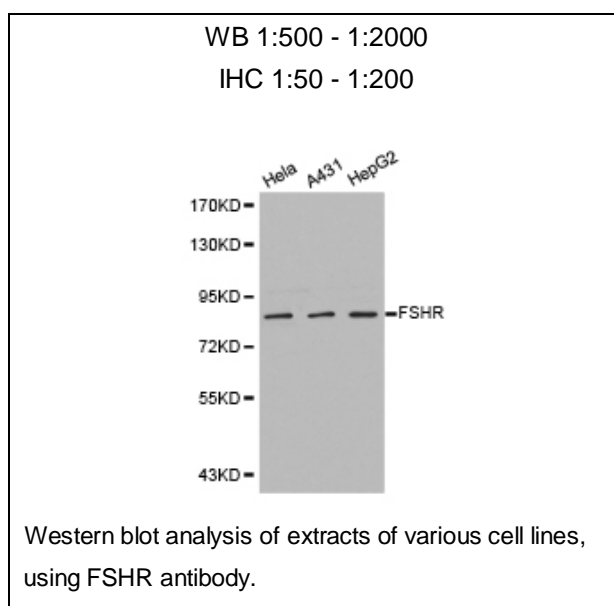




FSHR Polyclonal Antibody

E91480

- Catalog Number:** E91480
Amount: 100ul
Background: FSHR, also named as LGR1, belongs to the G-protein coupled receptor 1 family and FSH/LSH/TSH subfamily. FSHR is a receptor for follicle-stimulating hormone. The activity of this receptor is mediated by G proteins which activate adenylate cyclase. Defects in FSHR are a cause of ovarian dysgenesis type 1 (ODG1). Defects in FSHR are a cause of ovarian hyperstimulation syndrome (OHSS). The antibody is special to FSHR.
Species: Rabbit
Isotype: IgG
Storage/Stability: Store at -20oC or -80oC. Avoid freeze / thaw cycles. Buffer: PBS with 0.02% sodium azide, 50% glycerol, pH7.3.
Synonyms: FSHR;FSHRO;LGR1;MGC141667;MGC141668;ODG1 ;
Immunogen: Recombinant protein of human FSHR
Purification: Affinity purification
Reactivity: H M R
Applications: WB IHC
Molecular Weight: 78kDa
Swiss-Prot No. : P23945
Gene ID: 2492



For Research Use Only