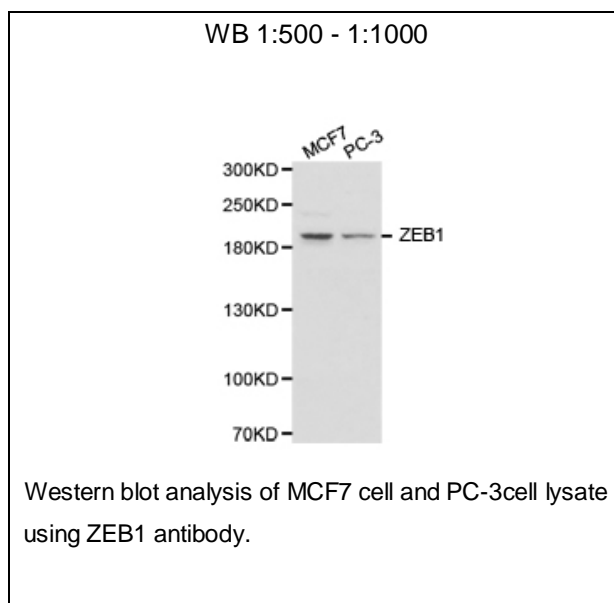




ZEB1 Polyclonal Antibody

E91500

- Catalog Number:** E91500
Amount: 100ul
Background: ZEB1(zinc-finger-enhancer binding protein 1), which is a members of the Zincfinger-Homeobox (ZFH)-family of repressors, acts as a transcriptional repressor that inhibits interleukin-2 (IL-2) gene expression. Depending on the quantity of cDNA and on the cell type, ZEB1 can enhance or repress the promoter activity of the ATP1A1 gene . Represses E-cadherin promoter and induces an epithelial-mesenchymal transition (EMT) by recruiting SMARCA4/BRG1. Represses BCL6 transcription in the presence of the corepressor CTBP1. Positively regulates neuronal differentiation. This is a rabbit polyclonal antibody raised against part of the full length of ZEB1 of human.
Species: Rabbit
Isotype: IgG
Storage/Stability: Store at -20oC or -80oC. Avoid freeze / thaw cycles. Buffer: PBS with 0.02% sodium azide, 50% glycerol, pH7.3.
Synonyms: AREB6; BZP; DELTA-EF1; MGC133261; NIL-2-A; NIL-2A; NIL2A; TCF8; ZEB; ZFHEP; ZFHX1A
Immunogen: Fusion protein of human ZEB1
Purification: Affinity purification
Reactivity: H M R
Applications: WB
Molecular Weight: 124kDa
Swiss-Prot No. : Q5T0W9
Gene ID: 6935



For Research Use Only