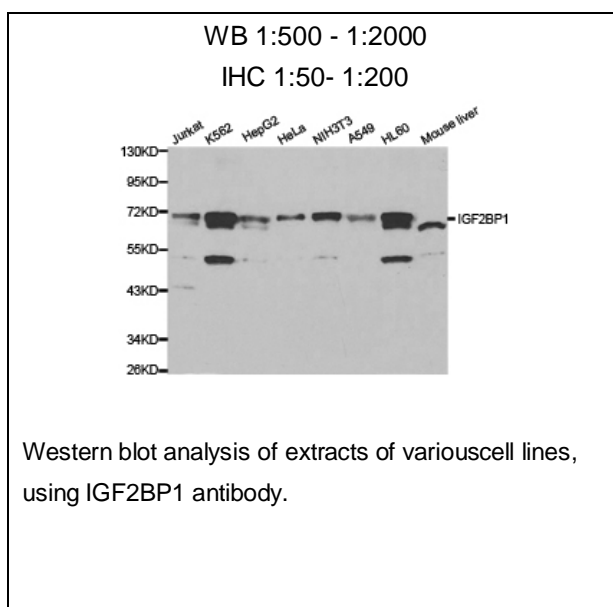




IGF2BP1 Polyclonal Antibody

E91517

- Catalog Number:** E91517
Amount: 100ul
Background: Insulin-like growth factor-II mRNA-binding proteins (IMPs) belong to a family of zipcode-binding proteins (1,2). Three members of this family, IMP1, IMP2, and IMP3, have been identified (1,2). They contain two RNA recognition motifs, four K homology domains, and were found to function in mRNA localization, turnover, and translation control (1,2). Research studies have implicated these proteins in a variety of physiological and pathological processes, such as growth and development (3), testicular neoplasia (4), and melanocytic neoplasia (5).
Species: Rabbit
Isotype: IgG
Storage/Stability: Store at -20oC or -80oC. Avoid freeze / thaw cycles. Buffer: PBS with 0.02% sodium azide, 50% glycerol, pH7.3.
Synonyms: IMP-1;CRDBP;ZBP1;CRD-BP;VICKZ1;ZBP-1;IMP1;IGF2BP1;
Immunogen: A synthetic peptide of human IGF2BP1
Purification: Affinity purification
Reactivity: H M R
Applications: WB IHC
Molecular Weight: 63kDa
Swiss-Prot No. : Q9NZI8
Gene ID: 10642
References: 1. Nielsen, F.C. et al. (2002) J Cell Sci 115, 2087-97. 2. Nielsen, J. et al. (2003) Biochem J 376, 383-91. 3. Hansen, T.V. et al. (2004) Mol Cell Biol 24, 4448-64. 4. Hammer, N.A. et al. (2005) Reproduction 130, 203-12. 5. Pryor, J.G. et al. (2008) Mod Pathol 21, 431-7.



For Research Use Only