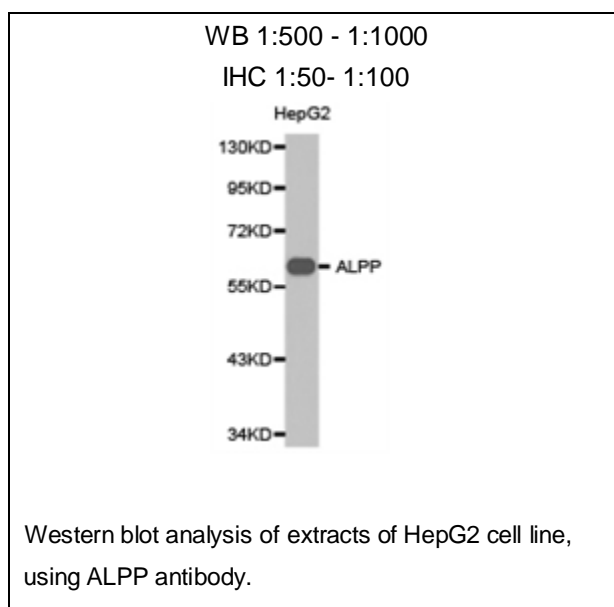




ALPP Polyclonal Antibody

E91529

- Catalog Number:** E91529
Amount: 100ul
Background: Alkaline phosphatases (AP) are glycosyl-phosphatidylinositol (GPI)-anchored, dimeric, Zn²⁺-metallated glycoproteins that catalyze the hydrolysis of phosphomonoesters into an inorganic phosphate and an alcohol. Placental alkaline phosphatase (also known as PLAP, ALPP, PALP, placental ALP-1 or Regan isozyme) is a 530 amino acid, tissue-specific AP that is expressed in the placenta, the serum of pregnant women and ectopically expressed in various cancers, including those of the ovary and testis. PLAP may assist in guiding migratory cells and transporting specific molecules, such as fatty acids and immunoglobulins, across the plasma membrane. The three tissue-specific APs identified in human, PLAP, germ cell AP (GCAP) and intestinal AP, are 90-98% homologous and their genes are clustered on chromosome 2q.
- Species:** Rabbit
Isotype: IgG
Storage/Stability: Store at -20oC or -80oC. Avoid freeze / thaw cycles. Buffer: PBS with 0.02% sodium azide, 50% glycerol, pH7.3.
- Synonyms:** ALP; FLJ61142; PALP; PLAP;
Immunogen: Fusionproteinof human ALPP
Purification: Affinity purification
Reactivity: H M R
Applications: WB IHC
Molecular Weight: 58kDa
Swiss-Prot No. : P05187
Gene ID: 250



For Research Use Only