

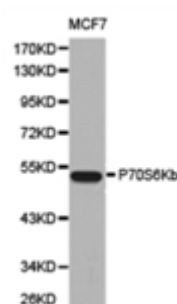


p70S6Kb Polyclonal Antibody

E91541

- Catalog Number:** E91541
Amount: 100ul
Background: RPS6KB2(ribosomal protein S6 kinase beta-2) is also named as 70 kDa ribosomal protein S6 kinase 2(P70S6K2),Serine/threonine-protein kinase 14B(STK14B) and belongs to the protein kinase superfamily. It is activated by mitogenic stimuli, including growth factors, cytokines, and phorbol esters. The activated enzyme phosphorylates several serine residues in the C terminus of ribosomal protein S6(PMID:9878560). This antibody is specific to RPS6KB2.
Species: Rabbit
Isotype: IgG
Storage/Stability: Store at -20oC or -80oC. Avoid freeze / thaw cycles. Buffer: PBS with 0.02% sodium azide, 50% glycerol, pH7.3.
Synonyms: RPS6KB2;KLS;SRK;S6K2;STK14B;p70S6Kb; -beta; S6K-beta2; P70-beta-1;P70-beta-2; p70(S6K)-beta;
Immunogen: Fusionproteinof human p70S6Kb
Purification: Affinity purification
Reactivity: H M R
Applications: WB
Molecular Weight: 53kDa
Swiss-Prot No. : Q9UBS0
Gene ID: 6199

WB 1:500 - 1:1000



Western blot analysis of extracts of MCF7 cell line,
using P70S6Kb antibody.

For Research Use Only