



ADD1 Polyclonal Antibody

E91592

Catalog Number: E91592**Amount:** 100ul

Background: Adducins are a family of cytoskeleton proteins encoded by three genes (alpha, beta, gamma). Adducin is a heterodimeric protein that consists of related subunits, which are produced from distinct genes but share a similar structure. Alpha- and beta-adducin include a protease-resistant N-terminal region and a protease-sensitive, hydrophilic C-terminal region. Alpha- and gamma-adducins are ubiquitously expressed. In contrast, beta-adducin is expressed at high levels in brain and hematopoietic tissues. Adducin binds with high affinity to Ca(2+)/calmodulin and is a substrate for protein kinases A and C. Alternative splicing results in multiple variants encoding distinct isoforms; however, not all variants have been fully described. [provided by RefSeq, Jul 2008]

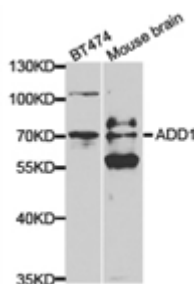
Species: Rabbit**Isotype:** IgG

Storage/Stability: Store at -20oC or -80oC. Avoid freeze / thaw cycles. Buffer: PBS with 0.02% sodium azide, 50% glycerol, pH7.3.

Synonyms: ADDA; MGC3339; MGC44427;**Immunogen:** Recombinant protein of human ADD1**Purification:** Affinity purification**Reactivity:** H M R**Applications:** WB IHC**Molecular Weight:** 44kDa**Swiss-Prot No. :** P35611**Gene ID:** 118

WB 1:500 - 1:2000

IHC 1:50- 1:200



Western blot analysis of extracts of BT474 and mouse brain cell lines, using ADD1 antibody.

For Research Use Only