



## CSNK2A2 Polyclonal Antibody

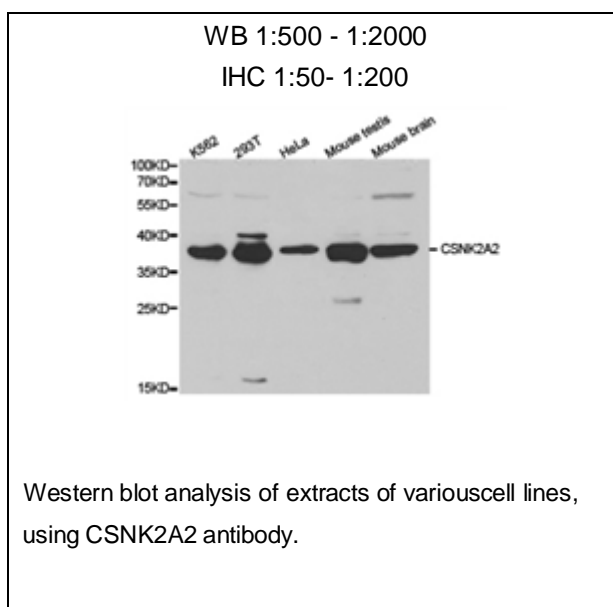
E91616

**Catalog Number:** E91616**Amount:** 100ul

**Background:** Casein kinase I (also designated CKI) and casein kinase II (CKII) compose a family of serine/threonine protein kinases which are present in all eukaryotes examined to date. Casein kinase I family members, which include casein kinase I $\alpha$ , I $\beta$ , I $\gamma$  and I $\epsilon$ , have been implicated in the control of cytoplasmic and nuclear processes, including DNA replication and repair. CKII is usually expressed as a tetrameric complex consisting of either an  $\alpha_2\beta_2$  or an  $\alpha\alpha'\beta\beta'$  structure. The  $\alpha$  catalytic subunit is stimulated by the  $\beta$  regulatory subunit, which undergoes autophosphorylation. Casein kinase II activity is high in the cytosol and nucleus of proliferating and differentiating cells. Casein kinase II is known to phosphorylate more than 100 different substrates including nuclear oncoproteins, transcription factors and enzymes involved in DNA metabolism.

**Species:** Rabbit**Isotype:** IgG

**Storage/Stability:** Store at -20°C or -80°C. Avoid freeze / thaw cycles. Buffer: PBS with 0.02% sodium azide, 50% glycerol, pH7.3.

**Synonyms:** CK2A2; CSNK2A1; FLJ43934;**Immunogen:** Recombinant protein of human CSNK2A2**Purification:** Affinity purification**Reactivity:** H M R**Applications:** WB IHC**Molecular Weight:** 41kDa**Swiss-Prot No. :** P19784**Gene ID:** 1459**For Research Use Only**