



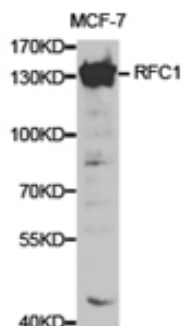
RFC1 Polyclonal Antibody

E91625

- Catalog Number:** E91625
Amount: 100ul
Background: This gene encodes the large subunit of replication factor C, a five subunit DNA polymerase accessory protein, which is a DNA-dependent ATPase required for eukaryotic DNA replication and repair. The large subunit acts as an activator of DNA polymerases, binds to the 3' end of primers, and promotes coordinated synthesis of both strands. It may also have a role in telomere stability. Alternatively spliced transcript variants encoding different isoforms have been noted for this gene. [provided by RefSeq, Mar 2011]
Species: Rabbit
Isotype: IgG
Storage/Stability: Store at -20oC or -80oC. Avoid freeze / thaw cycles. Buffer: PBS with 0.02% sodium azide, 50% glycerol, pH7.3.
Synonyms: A1; MGC51786; MHCBBF; PO-GA; RECC1; RFC; RFC140;
Immunogen: Recombinant protein of human RFC1
Purification: Affinity purification
Reactivity: H M R
Applications: WB IHC
Molecular Weight: 128kDa
Swiss-Prot No. : P35251
Gene ID: 5981

WB 1:500 - 1:2000

IHC 1:50- 1:200



Western blot analysis of extracts of MCF-7 cell lines,
using RFC1 antibody.

For Research Use Only