



SERPINF1 Polyclonal Antibody

E91673**Catalog Number:** E91673**Amount:** 100ul

Background: Pigment epithelium-derived growth factor (PEDF), also known as EPC-1 (early population doubling level cDNA-1), is a glycoprotein found naturally in the normal eye. PEDF has reported neuroprotective and differentiation properties and is secreted in abundance by retinal pigment epithelium cells. It belongs to the serine protease inhibitor (Serpin) superfamily and has been reported to inhibit angiogenesis and proliferation of several cell types. The "pooling" of PEDF within the interphotoreceptor matrix places this molecule in a prime physical location to affect the underlying neural retina. Additionally, PEDF induces neuronal differentiation and promotes survival of neurons of the central nervous system from degeneration caused by serum withdrawal or glutamate cytotoxicity.

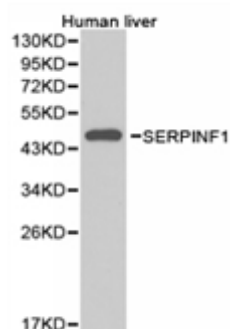
Species: Rabbit**Isotype:** IgG

Storage/Stability: Store at -20oC or -80oC. Avoid freeze / thaw cycles. Buffer: PBS with 0.02% sodium azide, 50% glycerol, pH7.3.

Synonyms: OI6; OI12; PEDF; EPC-1; PIG35;**Immunogen:** Recombinant protein of human SERPINF1**Purification:** Affinity purification**Reactivity:** H M R**Applications:** WB IHC**Molecular Weight:** 46kDa**Swiss-Prot No. :** P36955**Gene ID:** 5176

WB 1:500 - 1:2000

IHC 1:50- 1:200



Western blot analysis of extracts of human liver cell lines, using SERPINF1 antibody.

For Research Use Only