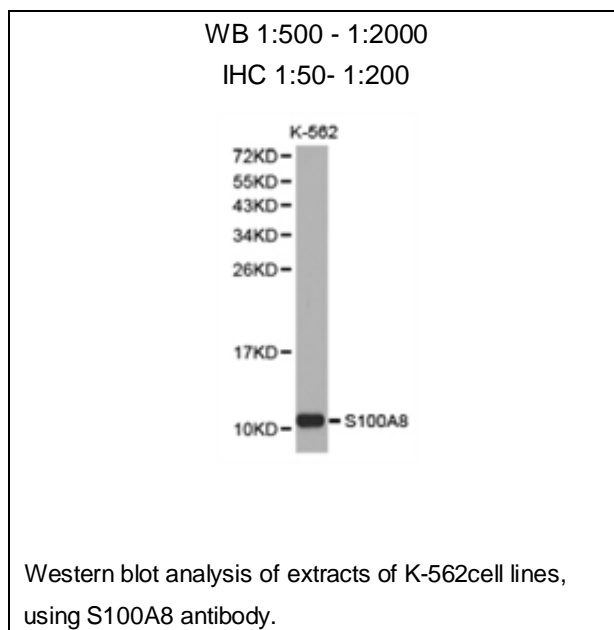




## S100A8 Polyclonal Antibody

E91688

- Catalog Number:** E91688  
**Amount:** 100ul  
**Background:** The protein encoded by this gene is a member of the S100 family of proteins containing 2 EF-hand calcium-binding motifs. S100 proteins are localized in the cytoplasm and/or nucleus of a wide range of cells, and involved in the regulation of a number of cellular processes such as cell cycle progression and differentiation. S100 genes include at least 13 members which are located as a cluster on chromosome 1q21. This protein may function in the inhibition of casein kinase and as a cytokine. Altered expression of this protein is associated with the disease cystic fibrosis. [provided by RefSeq, Jul 2008]  
**Species:** Rabbit  
**Isotype:** IgG  
**Storage/Stability:** Store at -20oC or -80oC. Avoid freeze / thaw cycles. Buffer: PBS with 0.02% sodium azide, 50% glycerol, pH7.3.  
**Synonyms:** 60B8AG; CAGA; CFAG; CGLA; CP-10; L1Ag; MA387; MIF; MRP8; NIF; P8;  
**Immunogen:** Recombinant protein of human S100A8  
**Purification:** Affinity purification  
**Reactivity:** H M R  
**Applications:** WB IHC  
**Molecular Weight:** 11kDa  
**Swiss-Prot No. :** P05109  
**Gene ID:** 6279



**For Research Use Only**