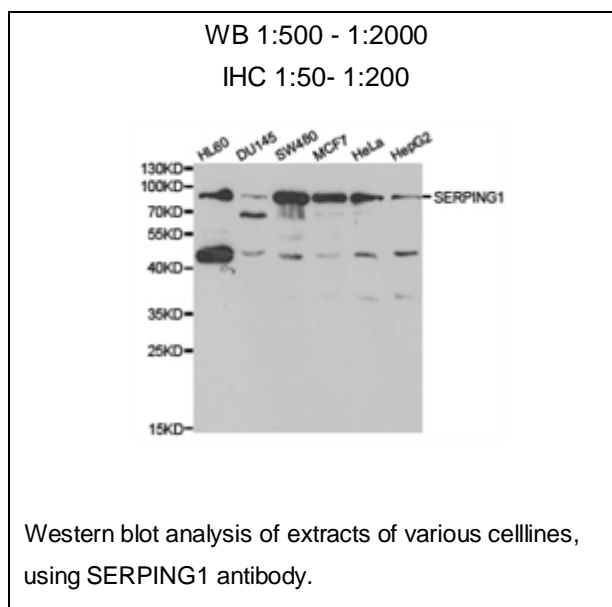




SERPING1 Polyclonal Antibody

E91717

- Catalog Number:** E91717
Amount: 100ul
Background: This gene encodes a highly glycosylated plasma protein involved in the regulation of the complement cascade. Its protein inhibits activated C1r and C1s of the first complement component and thus regulates complement activation. Deficiency of this protein is associated with hereditary angioneurotic edema (HANE). Alternative splicing results in multiple transcript variants encoding the same isoform. [provided by RefSeq, Jul 2008]
Species: Rabbit
Isotype: IgG
Storage/Stability: Store at -20oC or -80oC. Avoid freeze / thaw cycles. Buffer: PBS with 0.02% sodium azide, 50% glycerol, pH7.3.
Synonyms: C1IN; C1NH; HAE1; HAE2; C1INH;
Immunogen: Recombinant protein of human SERPING1
Purification: Affinity purification
Reactivity: H M R
Applications: WB IHC
Molecular Weight: 55kDa
Swiss-Prot No. : P05155
Gene ID: 710



For Research Use Only