



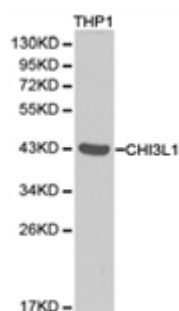
## CHI3L1 Polyclonal Antibody

E91723

- Catalog Number:** E91723  
**Amount:** 100ul  
**Background:** Chitinases catalyze the hydrolysis of chitin, which is an abundant glycopolymer found in insect exoskeletons and fungal cell walls. The glycoside hydrolase 18 family of chitinases includes eight human family members. This gene encodes a glycoprotein member of the glycosyl hydrolase 18 family. The protein lacks chitinase activity and is secreted by activated macrophages, chondrocytes, neutrophils and synovial cells. The protein is thought to play a role in the process of inflammation and tissue remodeling. [provided by RefSeq, Sep 2009]  
**Species:** Rabbit  
**Isotype:** IgG  
**Storage/Stability:** Store at -20oC or -80oC. Avoid freeze / thaw cycles. Buffer: PBS with 0.02% sodium azide, 50% glycerol, pH7.3.  
**Synonyms:** ASRT7; DKFZp686N19119; FLJ38139; GP39; HC-gp39; HCGP-3P; YKL40;YYL-40;  
**Immunogen:** Recombinant protein of human CHI3L1  
**Purification:** Affinity purification  
**Reactivity:** H M R  
**Applications:** WB IHC  
**Molecular Weight:** 43kDa  
**Swiss-Prot No. :** P36222  
**Gene ID:** 1116

WB 1:500 - 1:2000

IHC 1:50- 1:200



Western blot analysis of extracts of THP1 cell lines,  
using CHI3L1 antibody.

**For Research Use Only**