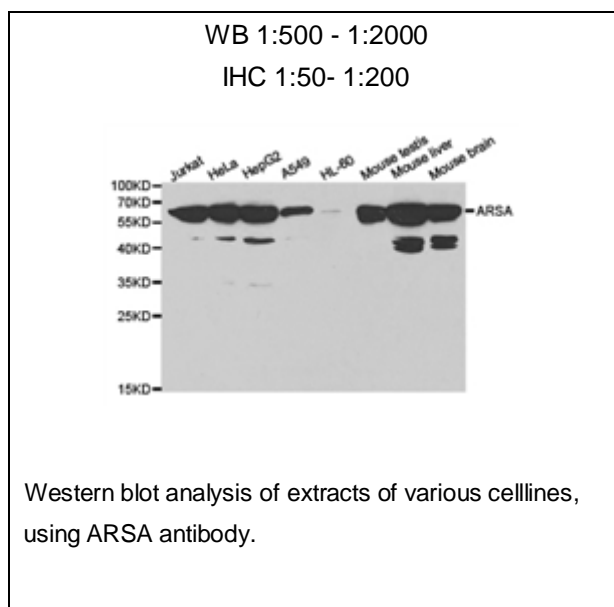




## ARSA Polyclonal Antibody

**E91736**

- Catalog Number:** E91736  
**Amount:** 100ul  
**Background:** The protein encoded by this gene hydrolyzes cerebroside sulfate to cerebroside and sulfate. Defects in this gene lead to metachromatic leucodystrophy (MLD), a progressive demyelination disease which results in a variety of neurological symptoms and ultimately death. Alternatively spliced transcript variants have been described for this gene. [provided by RefSeq, Dec 2010]  
**Species:** Rabbit  
**Isotype:** IgG  
**Storage/Stability:** Store at -20oC or -80oC. Avoid freeze / thaw cycles. Buffer: PBS with 0.02% sodium azide, 50% glycerol, pH7.3.  
**Synonyms:** MLD; ARSA;  
**Immunogen:** Recombinant protein of human ARSA  
**Purification:** Affinity purification  
**Reactivity:** H M R  
**Applications:** WB IHC  
**Molecular Weight:** 54kDa  
**Swiss-Prot No. :** P15289  
**Gene ID:** 410



**For Research Use Only**