



RPGR Polyclonal Antibody

E91844**Catalog Number:** E91844**Amount:** 100ul

Background: This gene encodes a protein with a series of six RCC1-like domains (RLDs), characteristic of the highly conserved guanine nucleotide exchange factors. The encoded protein is found in the Golgi body and interacts with RPGRIP1. This protein localizes to the outer segment of rod photoreceptors and is essential for their viability. Mutations in this gene have been associated with X-linked retinitis pigmentosa (XLRP). Multiple alternatively spliced transcript variants that encode different isoforms of this gene have been reported, but the full-length nature of only some have been determined. [provided by RefSeq, Dec 2008]

Species: Rabbit**Isotype:** IgG

Storage/Stability: Store at -20oC or -80oC. Avoid freeze / thaw cycles. Buffer: PBS with 0.02% sodium azide, 50% glycerol, pH7.3.

Synonyms: CRD; RP3; COD1; PCDX; RP15; XLRP3; orf15; CORDX1;

Immunogen: Recombinant protein of human RPGR

Purification: Affinity purification

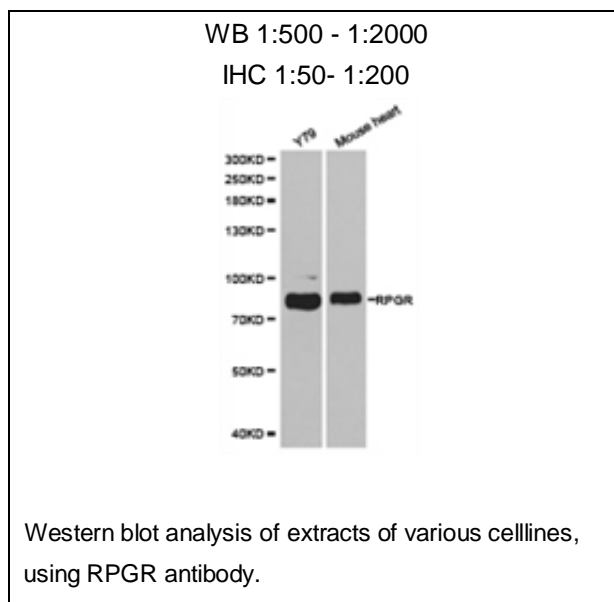
Reactivity: H M R

Applications: WB IHC

Molecular Weight: 113kDa

Swiss-Prot No. : Q92834

Gene ID: 6103



For Research Use Only