



LAMP2 Polyclonal Antibody

E91961

Catalog Number: E91961**Amount:** 100ul

Background: Lysosomal-associated membrane protein 2 (LAMP2, synonyms: LAMPB, CD107b) is a member of a family of membrane glycoproteins. This glycoprotein provides selectins with carbohydrate ligands. LAMP2 may plays a role in tumor cell metastasis. It may also functions in the protection, maintenance, and adhesion of the lysosome. Prior to posttranslational modification, Lysosome Associated Membrane Protein 2 (LAMP2) is a ~45 kDa polypeptide. Mature, functional LAMP2 is extensively glycosylated with a variety of different N linked and O linked oligosaccharides with a total molecular weight of ~100-110 kDa.

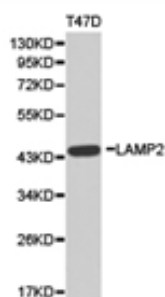
Species: Rabbit**Isotype:** IgG

Storage/Stability: Store at -20oC or -80oC. Avoid freeze / thaw cycles. Buffer: PBS with 0.02% sodium azide, 50% glycerol, pH7.3.

Synonyms: LAMPB; CD107b; LAMP-2; LGP110**Immunogen:** Recombinant protein of human LAMP2**Purification:** Affinity purification**Reactivity:** H M R**Applications:** WB IHC**Molecular Weight:** 45kDa**Swiss-Prot No. :** P13473**Gene ID:** 3920

WB 1:500 - 1:2000

IHC 1:50- 1:200



Western blot analysis of extracts of T47D cell lines,
using LAMP2 antibody.

For Research Use Only