



CSF2RA Polyclonal Antibody

E92034**Catalog Number:** E92034**Amount:** 100ul

Background: The protein encoded by this gene is the alpha subunit of the heterodimeric receptor for colony stimulating factor 2, a cytokine which controls the production, differentiation, and function of granulocytes and macrophages. The encoded protein is a member of the cytokine family of receptors. This gene is found in the pseudoautosomal region (PAR) of the X and Y chromosomes. Multiple transcript variants encoding different isoforms have been found for this gene, with some of the isoforms being membrane-bound and others being soluble. [provided by RefSeq, Jul 2008]

Species: Rabbit**Isotype:** IgG

Storage/Stability: Store at -20oC or -80oC. Avoid freeze / thaw cycles. Buffer: PBS with 0.02% sodium azide, 50% glycerol, pH7.3.

Synonyms: CD116; CDw116; CSF2R; CSF2RAX; CSF2RAY; CSF2RX; CSF2RY; GM-CSF-R-alpha; GMCSFR; GMR; MGC3848; MGC4838

Immunogen: Recombinant protein of human CSF2RA

Purification: Affinity purification

Reactivity: H

Applications: WB IHC

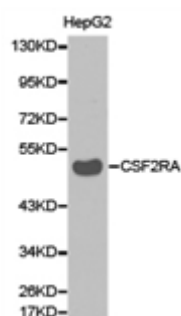
Molecular Weight: 47kDa

Swiss-Prot No. : P15509

Gene ID: 1438

WB 1:500 - 1:2000

IHC 1:50- 1:200



Western blot analysis of extracts of HepG2 celllines, using CSF2RA antibody.

For Research Use Only