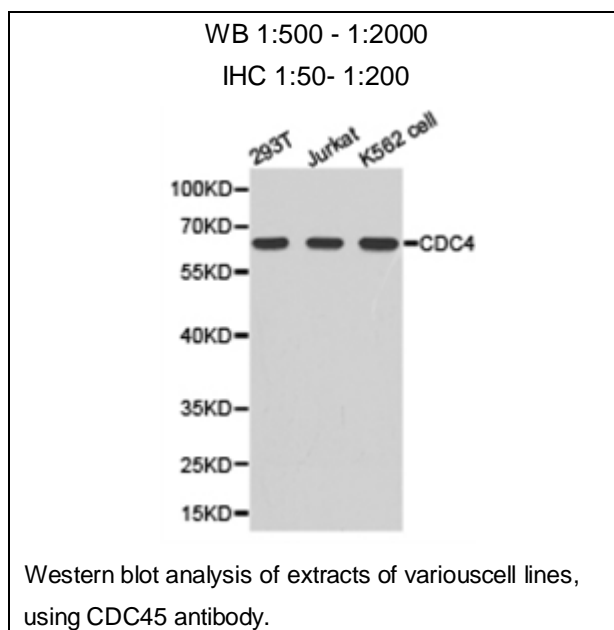




cdc45 Polyclonal Antibody

E92047

- Catalog Number:** E92047
Amount: 100ul
Background: The protein encoded by this gene was identified by its strong similarity with *Saccharomyces cerevisiae* Cdc45, an essential protein required to the initiation of DNA replication. Cdc45 is a member of the highly conserved multiprotein complex including Cdc6/Cdc18, the minichromosome maintenance proteins (MCMs) and DNA polymerase, which is important for early steps of DNA replication in eukaryotes. This protein has been shown to interact with MCM7 and DNA polymerase alpha. Studies of the similar gene in *Xenopus* suggested that this protein play a pivotal role in the loading of DNA polymerase alpha onto chromatin. Multiple alternatively spliced transcript variants encoding different isoforms have been found for this gene. [provided by RefSeq, May 2010]
Species: Rabbit
Isotype: IgG
Storage/Stability: Store at -20oC or -80oC. Avoid freeze / thaw cycles. Buffer: PBS with 0.02% sodium azide, 50% glycerol, pH7.3.
Synonyms: CDC45L; CDC45L2; PORC-PI-1;
Immunogen: Recombinant protein of human cdc45
Purification: Affinity purification
Reactivity: H M R
Applications: WB IHC
Molecular Weight: 64kDa
Swiss-Prot No. : O75419
Gene ID: 8318



For Research Use Only