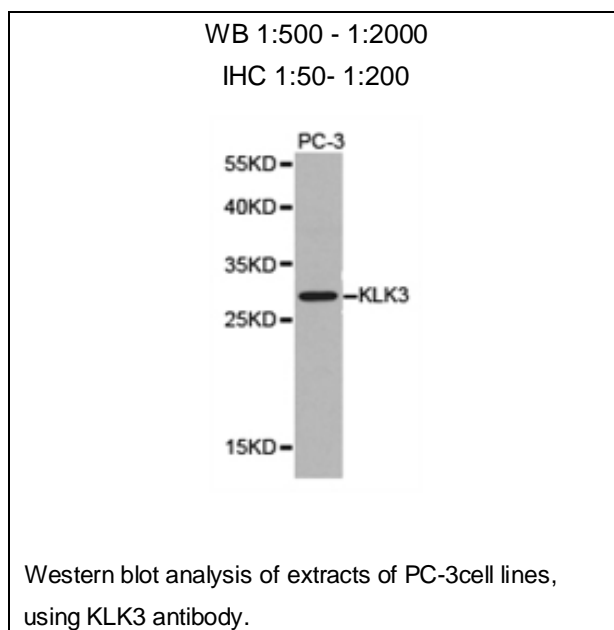




KLK3 Polyclonal Antibody

E92052

- Catalog Number:** E92052
Amount: 100ul
Background: Kallikrein 3 (KLK3), also known as Prostate Specific Antigen (PSA), is a member of the glandular kallikrein subfamily of serine proteases (1). It is produced by prostate epithelial cells and is secreted into prostatic ducts. Upon cleavage of 7 N-terminal amino acids (2), it is activated to liquefy semen in the seminal coagulum. Although PSA/KLK3 is produced in healthy individuals, investigators have found abnormally high levels in the blood of men with advanced prostate cancer (3,4).
Species: Rabbit
Isotype: IgG
Storage/Stability: Store at -20oC or -80oC. Avoid freeze / thaw cycles. Buffer: PBS with 0.02% sodium azide, 50% glycerol, pH7.3.
Synonyms: APS; KLK2A1; PSA; hK3;
Immunogen: Recombinant protein of human KLK3
Purification: Affinity purification
Reactivity: H
Applications: WB IHC
Molecular Weight: 29kDa
Swiss-Prot No. : P07288
Gene ID: 354
References: 1. Watt, K.W. et al. (1986) Proc Natl Acad Sci U S A 83, 3166-70. 2. Balk, S.P. et al. (2003) J Clin Oncol 21, 383-91. 3. Balk, S.P. et al. (2003) J Clin Oncol 21, 383-91. 4. Thompson, I.M. et al. (2004) N Engl J Med 350, 2239-46.



For Research Use Only