



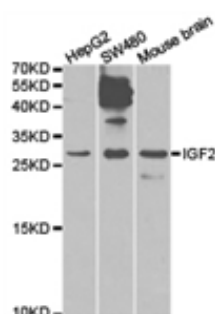
## IGF2 Polyclonal Antibody

**E92086**

- Catalog Number:** E92086  
**Amount:** 100ul  
**Background:** This gene encodes a member of the insulin family of polypeptide growth factors, which are involved in development and growth. It is an imprinted gene, expressed only from the paternal allele, and epigenetic changes at this locus are associated with Wilmstumour, Beckwith-Wiedemann syndrome, rhabdomyosarcoma, and Silver-Russell syndrome. A read-through INS-IGF2 gene exists, whose 5' region overlaps the INS gene and the 3' region overlaps this gene. Alternatively spliced transcript variants encoding different isoforms have been found for this gene. [provided by RefSeq, Oct 2010]  
**Species:** Rabbit  
**Isotype:** IgG  
**Storage/Stability:** Store at -20oC or -80oC. Avoid freeze / thaw cycles. Buffer: PBS with 0.02% sodium azide, 50% glycerol, pH7.3.  
**Synonyms:** IGF-II; PP9974; C11orf43;  
**Immunogen:** Recombinant protein of human IGF2  
**Purification:** Affinity purification  
**Reactivity:** H M R  
**Applications:** WB IHC  
**Molecular Weight:** 20kDa  
**Swiss-Prot No. :** P01344  
**Gene ID:** 3481

WB 1:500 - 1:2000

IHC 1:50- 1:200



Western blot analysis of extracts of various celllines,  
using IGF2 antibody.

**For Research Use Only**