



## REG3G Polyclonal Antibody

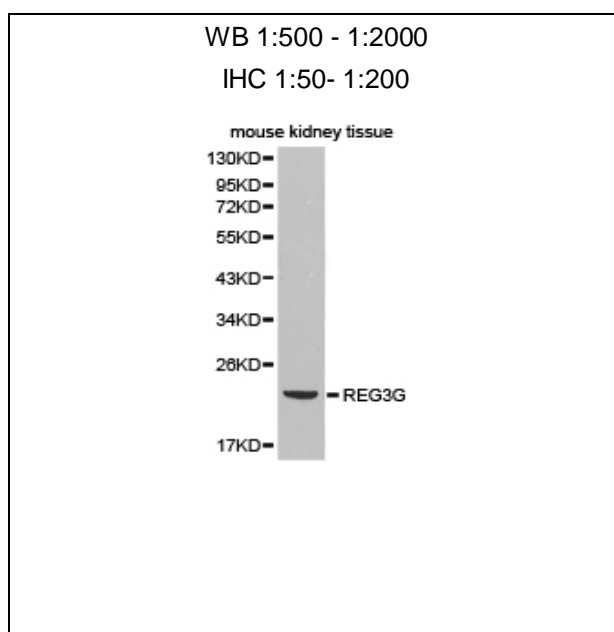
E92146

**Catalog Number:** E92146**Amount:** 100ul

**Background:** The regeneration (REG) family consists of secretory proteins involved in liver, pancreatic, gastric and intestinal cell proliferation or differentiation. Members of the REG family are divided into four subclasses, designated types I, II, III and IV, all of which share a common gene structure containing five introns and six exons. Members of the Reg family have been implicated in the regulation of cell growth, tumorigenesis and the progression of cancer. Reg III $\gamma$  (regenerating islet-derived 3 gamma), also known as pancreatitis-associated protein 1B, PAP1B, or UNQ429, is a 175 amino acid secreted protein that is expressed almost exclusively in pancreas, with low levels of expression in testis. Reg III $\gamma$  functions as an antimicrobial protein involved in controlling bacterial proliferation and may be induced during acute pancreatitis. The gene encoding Reg III $\gamma$  maps to human chromosome 2, which houses over 1,400 genes and comprises nearly 8% of the human genome.

**Species:** Rabbit**Isotype:** IgG

**Storage/Stability:** Store at -20oC or -80oC. Avoid freeze / thaw cycles. Buffer: PBS with 0.02% sodium azide, 50% glycerol, pH7.3.

**Synonyms:** AI449515**Immunogen:** Recombinant protein of mouse REG3G**Purification:** Affinity purification**Reactivity:** H M R**Applications:** WB IHC**Molecular Weight:** 19kDa**Swiss-Prot No. :** O09049**Gene ID:** 19695**For Research Use Only**

Western blot analysis of extracts of mouse kidney tissue , using REG3G antibody.