



## NPPB Polyclonal Antibody

E92179

**Catalog Number:** E92179**Amount:** 100ul

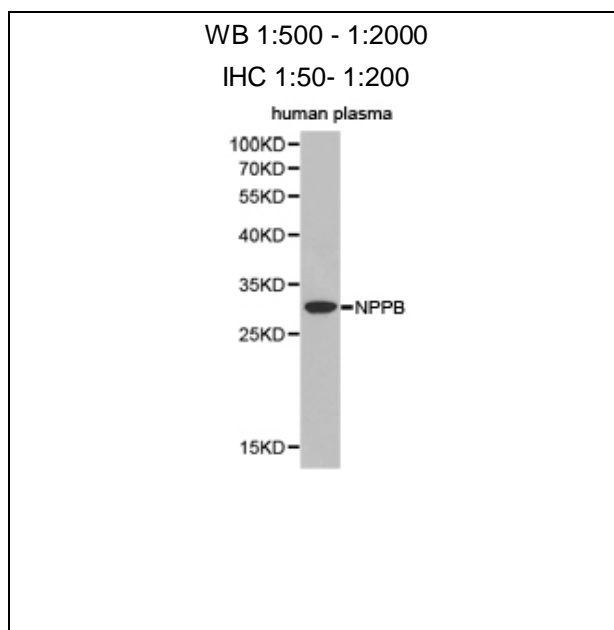
**Background:** B-type natriuretic peptide (BNP) is a cardiac neurohormone specifically secreted from the ventricles in response to volume expansion and pressure overload (1). The actions of BNP include natriuresis, diuresis, vasorelaxation, and inhibition of renin and aldosterone secretion. It is also found to help restore the body's salt and water balance and improve heart function (2). BNP is co-secreted along with a biologically inactive N-terminal fragment (NT-proBNP). Circulating BNP and NT-proBNP provide important information on cardiac dysfunction, hypervolemia, and risk in patients with severe impairment of kidney function (3).

**Species:** Rabbit**Isotype:** IgG

**Storage/Stability:** Store at -20oC or -80oC. Avoid freeze / thaw cycles. Buffer: PBS with 0.02% sodium azide, 50% glycerol, pH7.3.

**Synonyms:** NPPB; BNP; Gamma-brain natriuretic peptide;**Immunogen:** Recombinant protein of human NPPB**Purification:** Affinity purification**Reactivity:** H**Applications:** WB IHC**Molecular Weight:** 15kDa**Swiss-Prot No. :** P16860**Gene ID:** 4879

**References:** 1. Maisel AS, et al. N Engl J Med. 347(3):161-7, 2002 2. The UniProt Consortium. The Universal Protein Resource (UniProt), Nucleic Acids Res. 36:D190-D195 (2008) 3. Khalifeh N., et al. J Investig Med. 57(1):33-9, 2009

**For Research Use Only**

Western blot analysis of extracts of human plasma cell lines, using NPPB antibody.