



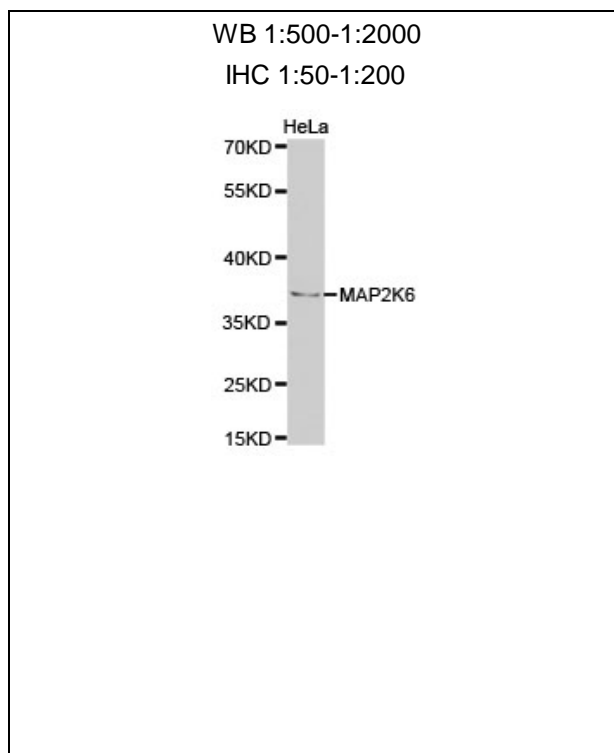
MAP2K6 Polyclonal Antibody

E92575**Catalog Number:** E92575**Amount:** 100ul

Background: This gene encodes a member of the dual specificity protein kinase family, which functions as a mitogen-activated protein (MAP) kinase kinase. MAP kinases, also known as extracellular signal-regulated kinases (ERKs), act as an integration point for multiple biochemical signals. This protein phosphorylates and activates p38 MAP kinase in response to inflammatory cytokines or environmental stress. As an essential component of p38 MAP kinase mediated signal transduction pathway, this gene is involved in many cellular processes such as stress induced cell cycle arrest, transcription activation and apoptosis.

Species: Rabbit**Isotype:** IgG

Storage/Stability: Store at -20°C or -80°C. Avoid freeze / thaw cycles. Buffer: PBS with 0.02% sodium azide, 50% glycerol, pH 7.3.

Synonyms: MAPKK6; MEK6; MKK6; PRKMK6; SAPKK3;**Immunogen:** Recombinant protein of human MAP2K6**Purification:** Affinity purification**Reactivity:** H M R**Applications:** WB IHC**Molecular Weight:** 37kD**Swiss-Prot No. :** P52564**Gene ID:** 5608

For Research Use Only

Western blot analysis of extracts of HeLa cell line,
using MAP2K6 antibody.