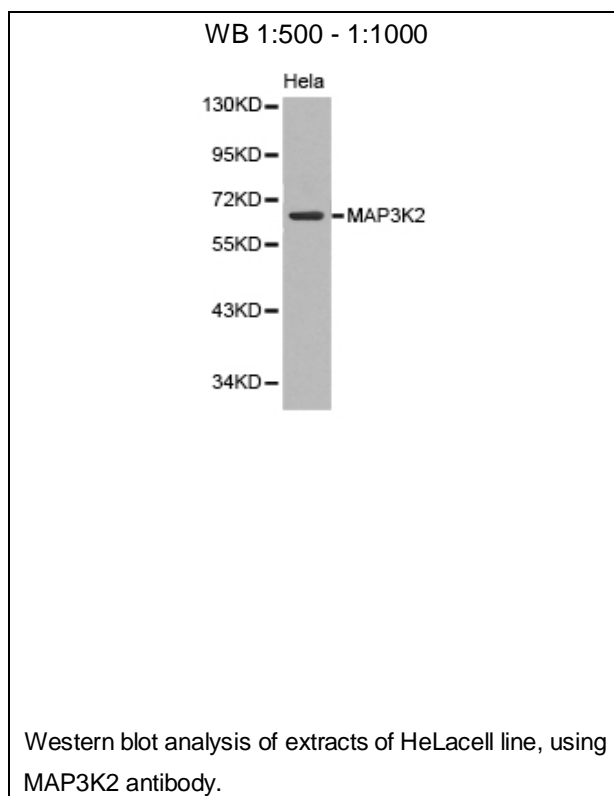




## MAP3K2 Polyclonal Antibody

E92611

- Catalog Number:** E92611  
**Amount:** 100ul  
**Background:** The protein encoded by this gene is a member of serine/threonine protein kinase family. This kinase preferentially activates other kinases involved in the MAP kinase signaling pathway. This kinase has been shown to directly phosphorylate and activate I $\kappa$ B kinases, and thus plays a role in NF- $\kappa$ B signaling pathway. This kinase has also been found to bind and activate protein kinase C-related kinase 2, which suggests its involvement in a regulated signaling process. [provided by RefSeq, Jul 2008]  
**Species:** Rabbit  
**Isotype:** IgG  
**Storage/Stability:** Store at -20oC or -80oC. Avoid freeze / thaw cycles. Buffer: PBS with 0.02% sodium azide, 50% glycerol, pH7.3.  
**Synonyms:** MEKK2; MEKK2B;  
**Immunogen:** A synthetic peptide of human MAP3K2  
**Purification:** Affinity purification  
**Reactivity:** H M R  
**Applications:** WB  
**Molecular Weight:** 70kDa  
**Swiss-Prot No. :** Q9Y2U5  
**Gene ID:** 10746



**For Research Use Only**

