



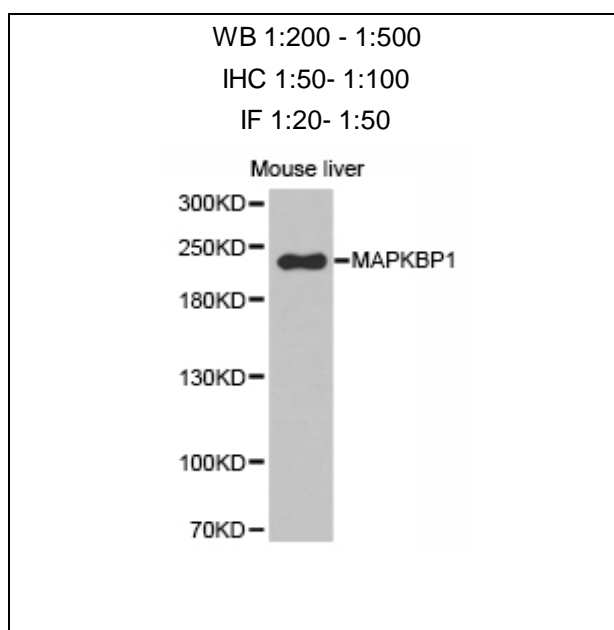
MAPKBP1 Polyclonal Antibody

E92626**Catalog Number:** E92626**Amount:** 100ul

Background: MAP kinases play a significant role in many biological processes, including cell adhesion and spreading, cell differentiation and apoptosis. MAPKBP-1 (mitogen-activated protein kinase binding protein 1), also known as JNKBP-1, is a 1,514 amino acid protein that contains twelve WD repeats. Induced by TRAF2 (TNF receptor-associated factor 2) and Tak1 (TGF- β -activated kinase 1), MAPKBP-1 is thought to act an adaptor protein for NF κ B (nuclear factor κ -B) activation. MAPKBP-1 interacts with JNK3 and may promote TRAF2 polyubiquitination. MAPKBP-1 exists as six alternatively spliced variants and is encoded by a gene located on human chromosome 15. Human chromosome 15 houses over 700 genes and comprises nearly 3% of the human genome. Angelman syndrome, Prader-Willi syndrome, Tay-Sachs disease and Marfan syndrome are all associated with defects in chromosome 15-localized genes.

Species: Rabbit**Isotype:** IgG

Storage/Stability: Store at -20oC or -80oC. Avoid freeze / thaw cycles. Buffer: PBS with 0.02% sodium azide, 50% glycerol, pH7.3.

Synonyms: JNKBP-1; MGC138851; MGC138852;**Immunogen:** Fusion protein of human MAPKBP1**Purification:** Affinity purification**Reactivity:** H M R**Applications:** WB IHC IF**Molecular Weight:** 109kDa,164kDa**Swiss-Prot No. :** O60336**Gene ID:** 23005**For Research Use Only**

Western blot analysis of extracts of mouse liver tissue,
using MAPKBP1 antibody.