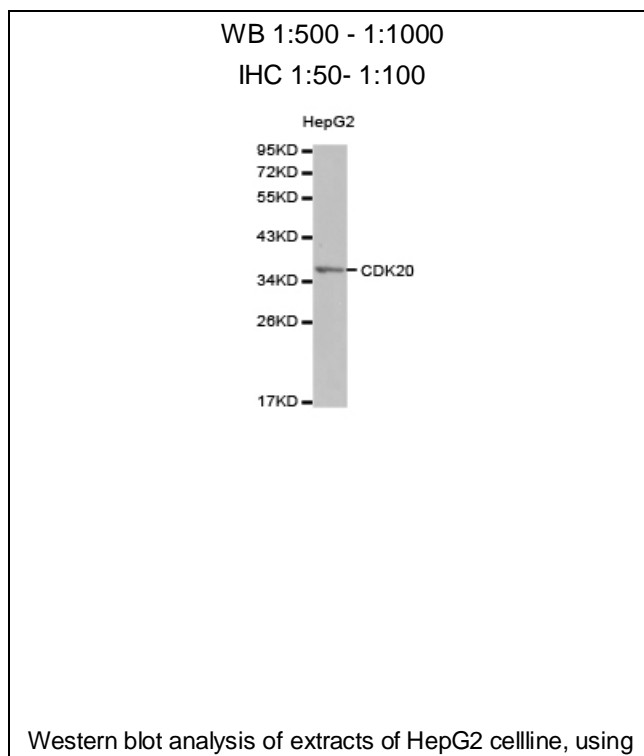




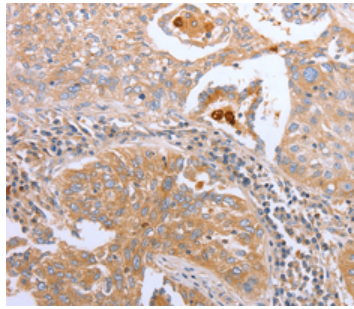
CDK20 Polyclonal Antibody

E92686

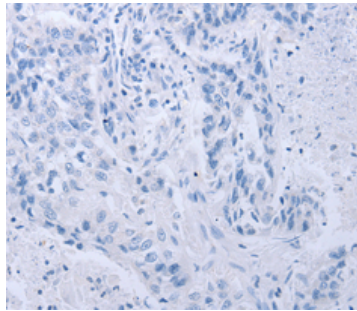
- Catalog Number:** E92686
Amount: 100ul
Background: The protein encoded by this gene contains a kinase domain most closely related to the cyclin-dependent protein kinases. The encoded kinase may activate cyclin-dependent kinase 2 and is involved in cell growth. Alternatively spliced transcript variants encoding distinct isoforms have been reported.
Species: Rabbit
Isotype: IgG
Storage/Stability: Store at -20oC or -80oC. Avoid freeze / thaw cycles. Buffer: PBS with 0.02% sodium azide, 50% glycerol, pH7.3.
Synonyms: P42; CCRK; CDCH; PNQALRE;
Immunogen: Recombinant protein of human CDK20
Purification: Affinity purification
Reactivity: H M R
Applications: WB IHC
Molecular Weight: 31kDa
Swiss-Prot No. : Q8IZL9
Gene ID: 23552



For Research Use Only



CDK20antibody.



Immunohistochemistry

f paraffin-embeddedhuman lung cancer tissue
usingCDK20antibody.