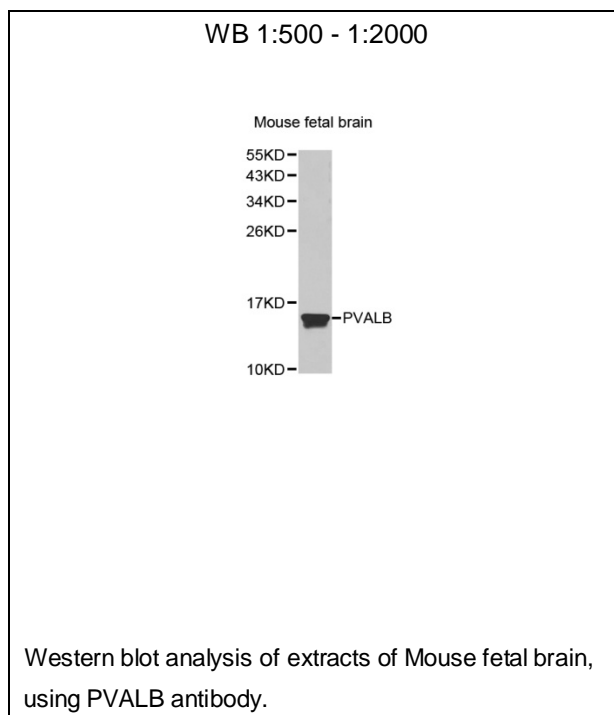




PVALB Polyclonal Antibody

E92791

- Catalog Number:** E92791
Amount: 100ul
Background: Parvalbumin is a calcium-binding albumin protein with low molecular weight (typically 9-11 kDa). It has three EF hand motifs and is structurally related to calmodulin and troponin C. Parvalbumin is localised in fast-contracting muscles, where its levels are highest, and in the brain and some endocrine tissues. Parvalbumin is a small, stable protein containing EF-hand type calcium binding sites. It is involved in calcium signaling. Typically, this protein is broken into three domains, domains AB, CD and EF, each individually containing a helix-loop-helix motif.
Species: Rabbit
Isotype: IgG
Storage/Stability: Store at -20oC or -80oC. Avoid freeze / thaw cycles. Buffer: PBS with 0.02% sodium azide, 50% glycerol, pH7.3.
Synonyms: D22S749;
Immunogen: Fusion protein of human PVALB
Purification: Affinity purification
Reactivity: H M R
Applications: WB
Molecular Weight: 12kDa
Swiss-Prot No. : P20472
Gene ID: 5816



For Research Use Only