



CUL4APolyclonal Antibody

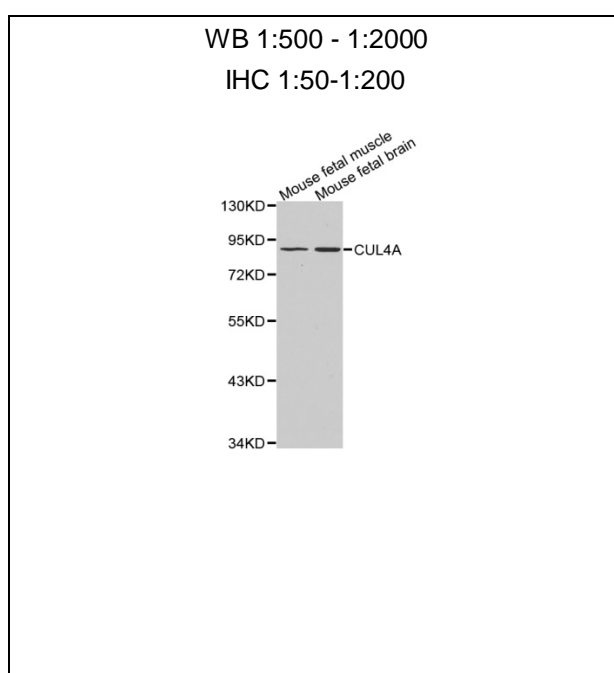
E92882

Catalog Number: E92882**Amount:** 100ul

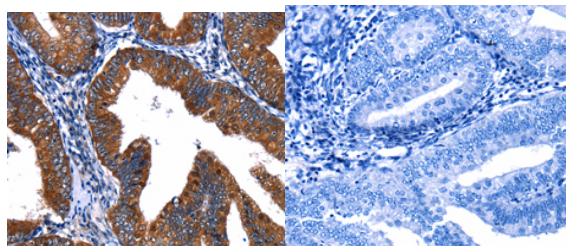
Background: CUL4A is the ubiquitin ligase component of a multimeric complex involved in the degradation of DNA damage-response proteins. Core component of multiple cullin-RING-based E3 ubiquitin-protein ligase complexes which mediate the ubiquitination and subsequent proteasomal degradation of target proteins. As a scaffold protein may contribute to catalysis through positioning of the substrate and the ubiquitin-conjugating enzyme. The E3 ubiquitin-protein ligase activity of the complex is dependent on the neddylation of the cullin subunit and is inhibited by the association of the deneddylated cullin subunit with TIP120A/CAND1. The functional specificity of the E3 ubiquitin-protein ligase complex depends on the variable substrate recognition component. DCX(DET1-COP1) directs ubiquitination of JUN. DCX(DDB2) directs ubiquitination of XPC.

Species: Rabbit**Isotype:** IgG

Storage/Stability: Store at -20oC or -80oC. Avoid freeze / thaw cycles. Buffer: PBS with 0.02% sodium azide, 50% glycerol, pH7.3.

Synonyms:**Immunogen:** A synthetic peptide of human CUL4A**Purification:** Affinity purification**Reactivity:** H M R**Applications:** WB IHC**Molecular Weight:** 88kDa**Swiss-Prot No. :** Q13619**Gene ID:** 8451**For Research Use Only**

Western blot analysis of extracts of various celllines,
using CUL4A antibody.



Immunohistochemistry of paraffin-embedded human
cervical cancer tissue using CUL4A antibody.