



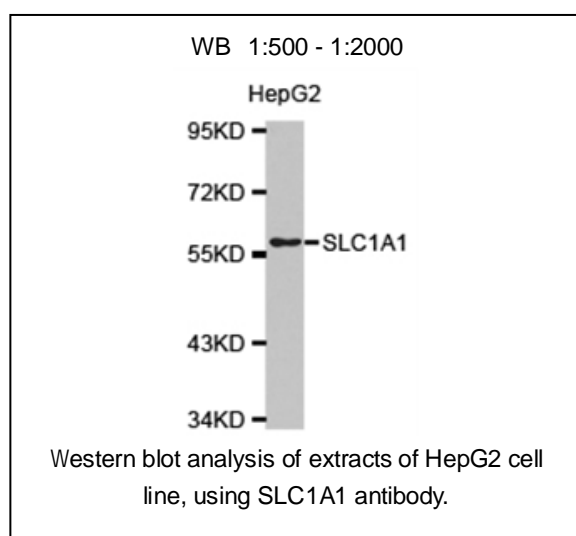
SLC1A1 Polyclonal Antibody

E92903**Catalog Number:** E92903**Amount:** 100ul, 100ug/100ul

Background: This gene encodes a member of the high-affinity glutamate transporters that play an essential role in transporting glutamate across plasma membranes. In brain, these transporters are crucial in terminating the postsynaptic action of the neurotransmitter glutamate, and in maintaining extracellular glutamate concentrations below neurotoxic levels. This transporter also transports aspartate, and mutations in this gene are thought to cause dicarboxylicamino aciduria, also known as glutamate-aspartate transport defect.

Calculated MW: 57kDa**Form of Antibody:** Rabbit IgG in PBS with 0.02% sodium azide, 50% glycerol, pH7.3.**Storage/Stability:** Store at -20°C or -80°C. Avoid freeze / thaw cycles.**Immunogen:** A synthetic peptide of human SLC1A1**Gene ID:** 6505**Synonyms:** EAAT3;EAAC1;**Purification:** Affinity purification**Reactivity:** Human, Mouse**Applications:** WB**Swiss-Prot No. :** P43005

- References:**
1. Zhang, L. et al. (2005) Cell Metab 2, 141-8.
 2. Wolfrum, C. and Stoffel, M. (2006) Cell Metab 3, 99-110.
 3. Levinson-Dushnik, M. and Benvenisty, N. (1997) Mol Cell Biol 17, 3817-22.
 4. Weinstein, D.C. et al. (1994) Cell 78, 575-88.
 5. Ang, S.L. and Rossant, J. (1994) Cell 78, 561-74.



For Research Use Only