



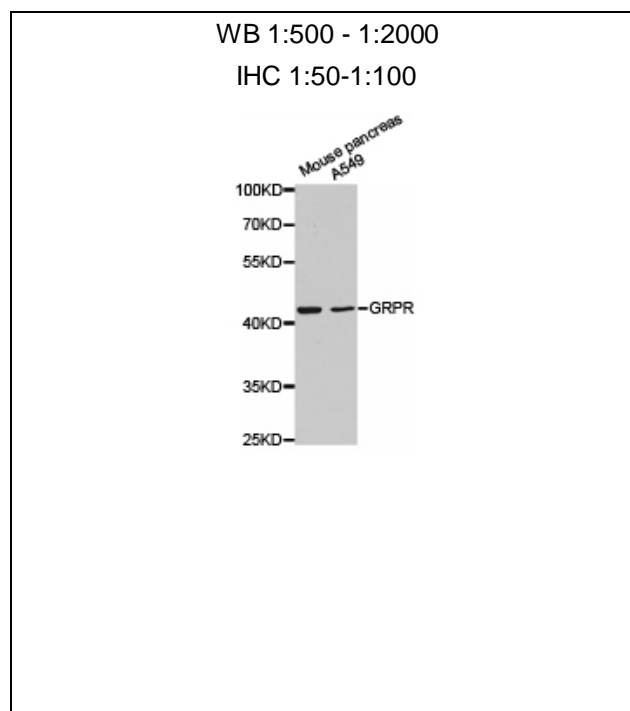
GRPR Polyclonal Antibody

E92940**Catalog Number:** E92940**Amount:** 100ul

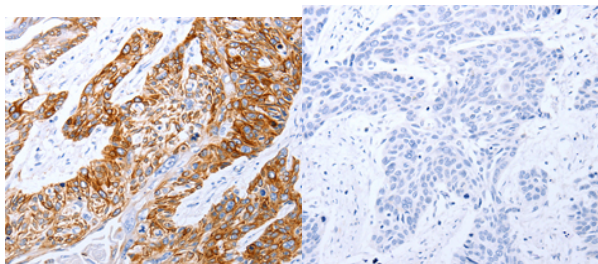
Background: Gastrin-releasing peptide (GRP) regulates numerous functions of the gastrointestinal and central nervous systems, including release of gastrointestinal hormones, smooth muscle cell contraction, and epithelial cell proliferation and is a potent mitogen for neoplastic tissues. The effects of GRP are mediated through the gastrin-releasing peptide receptor. This receptor is a glycosylated, 7-transmembrane G-protein coupled receptor that activates the phospholipase C signaling pathway. The receptor is aberrantly expressed in numerous cancers such as those of the lung, colon, and prostate. An individual with autism and multiple exostoses was found to have a balanced translocation between chromosome 8 and a chromosome X breakpoint located within the gastrin-releasing peptide receptor gene.

Species: Rabbit**Isotype:** IgG

Storage/Stability: Store at -20oC or -80oC. Avoid freeze / thaw cycles. Buffer: PBS with 0.02% sodium azide, 50% glycerol, pH7.3.

Synonyms:**Immunogen:** Recombinant protein of human GRPR**Purification:** Affinity purification**Reactivity:** H M R**Applications:** WB IHC**Molecular Weight:** 43kDa**Swiss-Prot No. :** P30550**Gene ID:** 2925**For Research Use Only**

Western blot analysis of extracts of various cell lines,
using GRPR antibody.



Immunohistochemistry of paraffin-embedded human
esophagus cancer tissue using GRPR antibody.