



## GRM1 Polyclonal Antibody

E92963

**Catalog Number:** E92963**Amount:** 100ul

**Background:** L-glutamate is the major excitatory neurotransmitter in the central nervous system and activates both ionotropic and metabotropic glutamate receptors. Glutamatergic neurotransmission is involved in most aspects of normal brain function and can be perturbed in many neuropathologic conditions. The metabotropic glutamate receptors are a family of G protein-coupled receptors, that have been divided into 3 groups on the basis of sequence homology, putative signal transduction mechanisms, and pharmacologic properties. Group I includes GRM1 and GRM5 and these receptors have been shown to activate phospholipase C. Group II includes GRM2 and GRM3 while Group III includes GRM4, GRM6, GRM7 and GRM8. Group II and III receptors are linked to the inhibition of the cyclic AMP cascade but differ in their agonist selectivities.

**Species:** Rabbit**Isotype:** IgG

**Storage/Stability:** Store at -20oC or -80oC. Avoid freeze / thaw cycles. Buffer: PBS with 0.02% sodium azide, 50% glycerol, pH7.3.

**Synonyms:** GRM1A; mGlu1; GPRC1A; MGLUR1; SCAR13; MGLUR1A

**Immunogen:** A synthetic peptide of human GRM1

**Purification:** Affinity purification

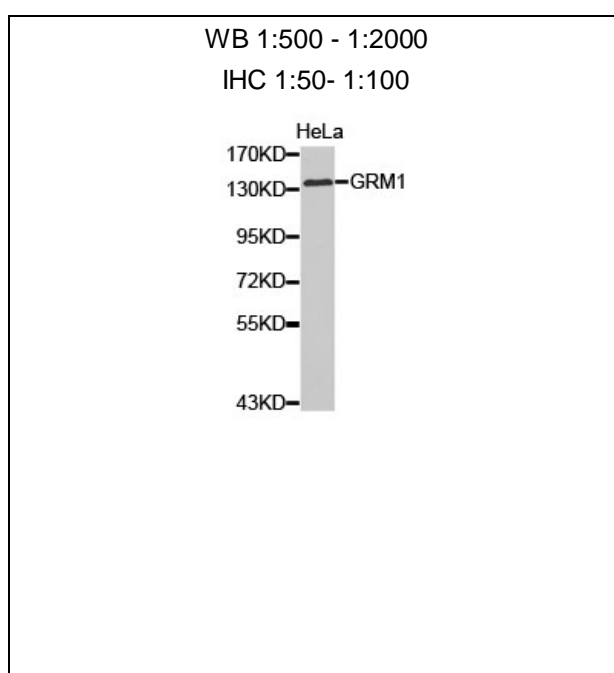
**Reactivity:** H M R

**Applications:** WB IHC

**Molecular Weight:** 132kDa

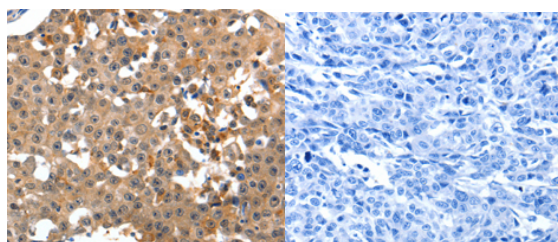
**Swiss-Prot No. :** Q13255

**Gene ID:** 2911



**For Research Use Only**

Western blot analysis of extracts of Hela celllysate, using GRM1 antibody.



Immunohistochemistry of paraffin-embedded human breast cancer tissue using GRM1 antibody.