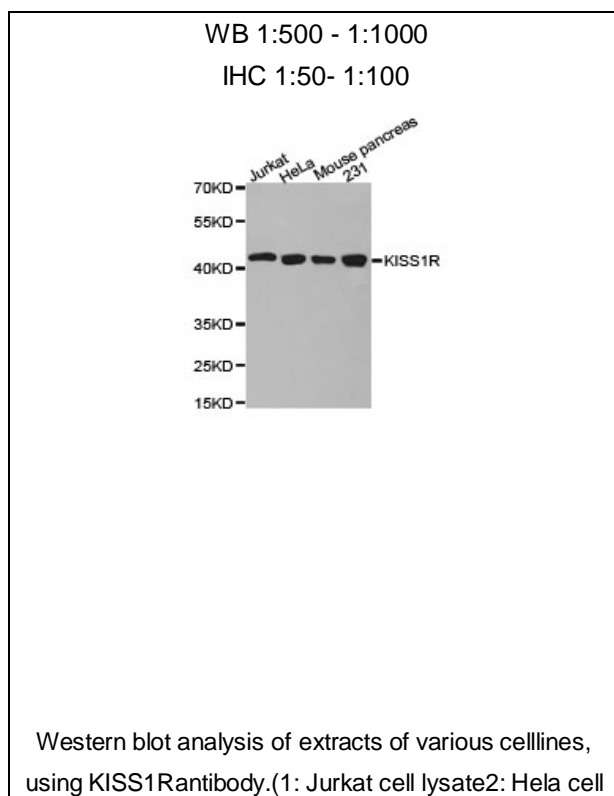




KISS1R Polyclonal Antibody

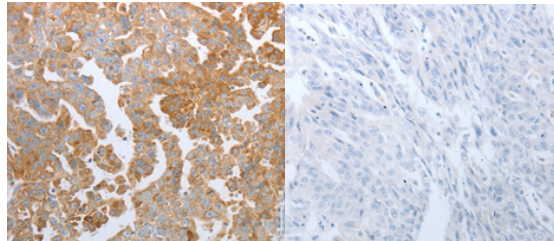
E92967

- Catalog Number:** E92967
Amount: 100ul
Background: The protein encoded by this gene is a galanin-like G protein-coupled receptor that binds metastin, a peptide encoded by the metastasis suppressor gene KISS1. The tissue distribution of the expressed gene suggests that it is involved in the regulation of endocrine function, and this is supported by the finding that this gene appears to play a role in the onset of puberty. Mutations in this gene have been associated with hypogonadotropic hypogonadism and central precocious puberty.
Species: Rabbit
Isotype: IgG
Storage/Stability: Store at -20oC or -80oC. Avoid freeze / thaw cycles. Buffer: PBS with 0.02% sodium azide, 50% glycerol, pH7.3.
Synonyms: HH8; GPR54; AXOR12; KISS-1R; HOT7T175
Immunogen: A synthetic peptide of human KISS1R
Purification: Affinity purification
Reactivity: H M R
Applications: WB IHC
Molecular Weight: 43kDa
Swiss-Prot No. : Q969F8
Gene ID: 84634



For Research Use Only

lysate 3: Mouse pancreas tissue lysate 4: 231 cell
lysate)



Immunohistochemistry of paraffin-embedded human
ovarian cancer tissue using KISS1R antibody.