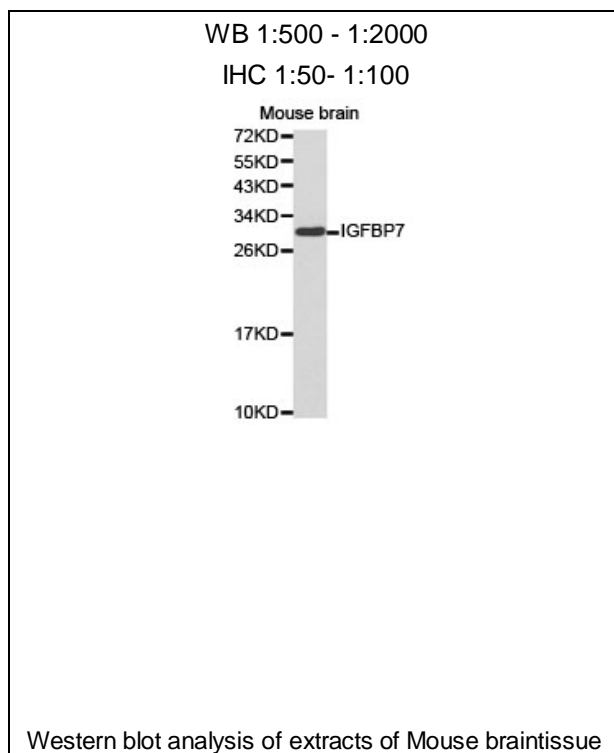




IGFBP7 Polyclonal Antibody

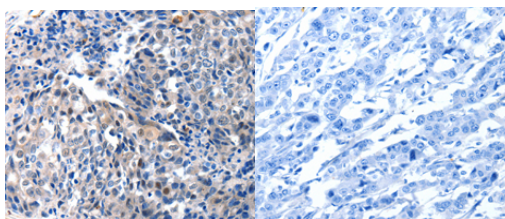
E92982

- Catalog Number:** E92982
Amount: 100ul
Background: This gene encodes a member of the insulin-like growth factor (IGF)-binding protein (IGFBP) family. IGFBPs bind IGFs with high affinity, and regulate IGF availability in body fluids and tissues and modulate IGF binding to its receptors. This protein binds IGF-I and IGF-II with relatively low affinity, and belongs to a subfamily of low-affinity IGFBPs. It also stimulates prostacyclin production and cell adhesion. Alternatively spliced transcript variants encoding different isoforms have been described for this gene, and one variant has been associated with retinal arterial macroaneurysm.
Species: Rabbit
Isotype: IgG
Storage/Stability: Store at -20oC or -80oC. Avoid freeze / thaw cycles. Buffer: PBS with 0.02% sodium azide, 50% glycerol, pH7.3.
Synonyms: AGM; PSF; TAF; FSTL2; IBP-7; MAC25; IGFBP-7; RAMSVPS; IGFBP-7v; IGFBPRP1
Immunogen: A synthetic peptide of human IGFBP7
Purification: Affinity purification
Reactivity: H M R
Applications: WB IHC
Molecular Weight: 29kDa
Swiss-Prot No. : Q16270
Gene ID: 3490



For Research Use Only

lysate, using IGFBP7 antibody.



Immunohistochemistry of paraffin-embedded human breast cancer tissue using IGFBP7 antibody.