



## IL2RA Polyclonal Antibody

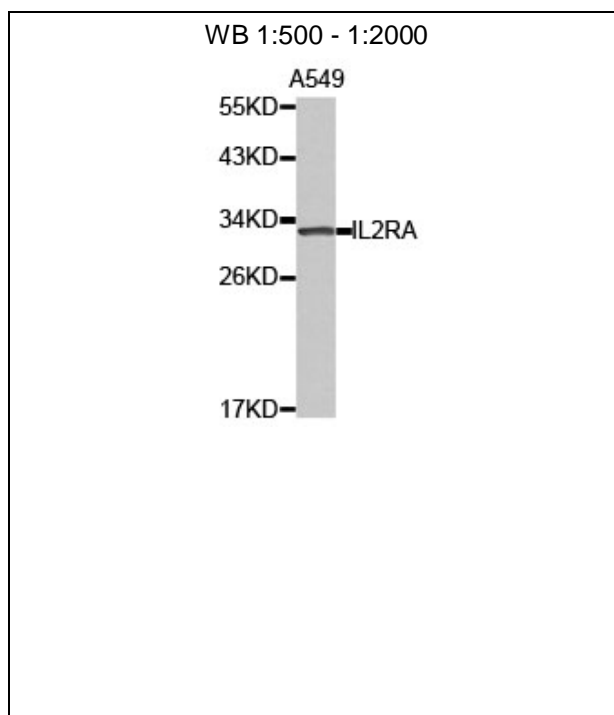
E92984

**Catalog Number:** E92984**Amount:** 100ul

**Background:** The interleukin 2 (IL2) receptor alpha (IL2RA) and beta (IL2RB) chains, together with the common gamma chain (IL2RG), constitute the high-affinity IL2 receptor. Homodimeric alpha chains (IL2RA) result in low-affinity receptor, while homodimeric beta (IL2RB) chains produce a medium-affinity receptor. Normally an integral-membrane protein, soluble IL2RA has been isolated and determined to result from extracellular proteolysis. Alternately-spliced IL2RA mRNAs have been isolated, but the significance of each is presently unknown. Mutations in this gene are associated with interleukin 2 receptor alpha deficiency.

**Species:** Rabbit**Isotype:** IgG

**Storage/Stability:** Store at -20oC or -80oC. Avoid freeze / thaw cycles. Buffer: PBS with 0.02% sodium azide, 50% glycerol, pH7.3.

**Synonyms:** CD25; IL2R; TCGFR; IDDM10**Immunogen:** A synthetic peptide of human IL2RA**Purification:** Affinity purification**Reactivity:** H M R**Applications:** WB**Molecular Weight:** 31kDa**Swiss-Prot No. :** P01589**Gene ID:** 3559**For Research Use Only**

Western blot analysis of extracts of A549 celllysate,  
using IL2RA antibody.

