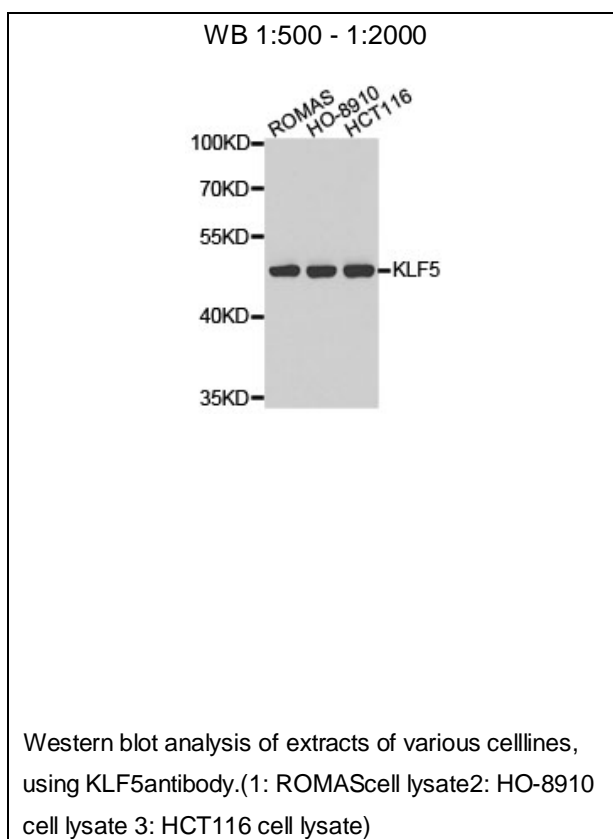




KLF5 Polyclonal Antibody

E92989

- Catalog Number:** E92989
Amount: 100ul
Background: This gene encodes a member of the Kruppel-like factor subfamily of zinc finger proteins. Since the protein localizes to the nucleus and binds the epidermal growth factor response element, it is thought to be a transcription factor.
Species: Rabbit
Isotype: IgG
Storage/Stability: Store at -20oC or -80oC. Avoid freeze / thaw cycles. Buffer: PBS with 0.02% sodium azide, 50% glycerol, pH7.3.
Synonyms: CKLF; IKLF; BTEB3
Immunogen: A synthetic peptide of human KLF5
Purification: Affinity purification
Reactivity: H M R
Applications: WB
Molecular Weight: 51kDa
Swiss-Prot No. : Q13887
Gene ID: 688



For Research Use Only