



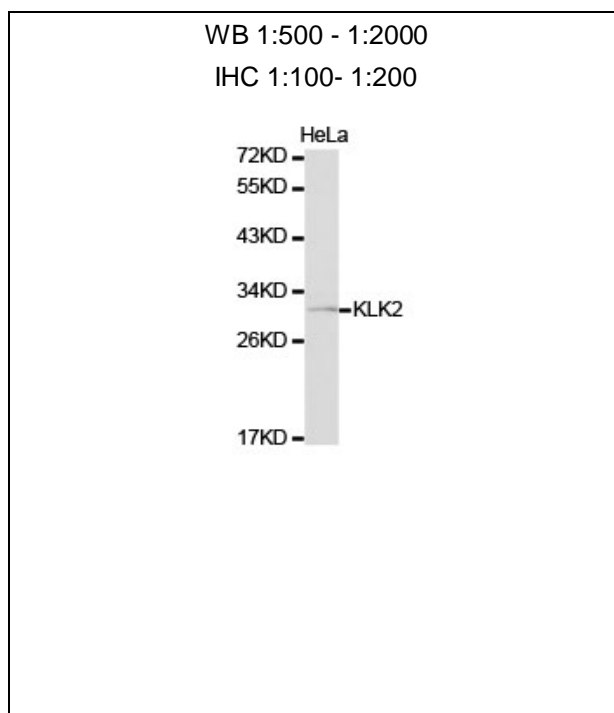
KLK2 Polyclonal Antibody

E92990**Catalog Number:** E92990**Amount:** 100ul

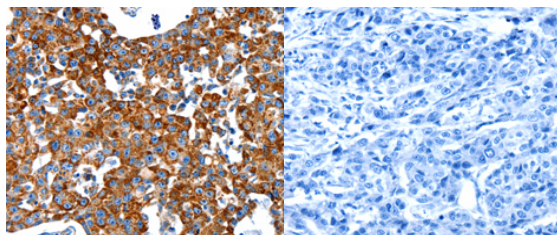
Background: This gene encodes a member of the grandular kallikrein protein family. Kallikreins are a subgroup of serine proteases that are clustered on chromosome 19. Members of this family are involved in a diverse array of biological functions. The protein encoded by this gene is a highly active trypsin-like serine protease that selectively cleaves at arginine residues. This protein is primarily expressed in prostatic tissue and is responsible for cleaving pro-prostate-specific antigen into its enzymatically active form. This gene is highly expressed in prostate tumor cells and may be a prognostic maker for prostate cancer risk. Alternate splicing results in both coding and non-coding transcript variants.

Species: Rabbit**Isotype:** IgG

Storage/Stability: Store at -20oC or -80oC. Avoid freeze / thaw cycles. Buffer: PBS with 0.02% sodium azide, 50% glycerol, pH7.3.

Synonyms: hK2; hGK-1; KLK2A2**Immunogen:** A synthetic peptide of human KLK2**Purification:** Affinity purification**Reactivity:** H M R**Applications:** WB IHC**Molecular Weight:** 29kDa**Swiss-Prot No. :** P20151**Gene ID:** 3817**For Research Use Only**

Western blot analysis of extracts of Hela celllysate,
using KLK2antibody.



Immunohistochemistryof paraffin-embeddedHuman
breast cancer tissue usingKLK2antibody.